

MATLAB R2017a

HOME PLOTS APPS EDITOR PUBLISH VIEW

New Open Save Find Files Compare Print Find Go To Comment Indent Breakpoints Run Run and Advance Run and Time

FILE NAVIGATE EDIT BREAKPOINTS RUN

C:\Users\mofeoluwa\Desktop

Current Folder

- Halo MP
- MATLABR2017aExtractedDVD
- 16ENG06015.pdf
- Control Panel - Shortcut.lnk
- desktop.ini
- HP Photo Creations.lnk
- OYEWALEOLUWASEMILORE1.m
- OYEWALEOLUWASEMILORE2.m
- OYEWALEOLUWASEMILORE3.m
- silver.m
- unye1.m
- unye2.m
- unye3.m
- Zuma's Revenge.lnk

Details

Workspace

Name	Value
A	4x4 double
b	[-4;2;6;4]
x	[4;-9.7145e-17;

Editor - C:\Users\mofeoluwa\Desktop\OYEWALEOLUWASEMILORE1.m

```

1  commandwindow
2  clear
3  clc
4  close all
5  format bank
6  A=[0 10 4 -2;-3 -17 1 2;1 1 1 0;8 -34 16 -10]
7  b=[-4;2;6;4]
8  x=inv(A)*b

```

Command Window

```

A =
     0    10.00     4.00    -2.00
   -3.00   -17.00     1.00     2.00
     1.00     1.00     1.00     0
     8.00   -34.00    16.00   -10.00

>> b

b =
   -4.00
    2.00
    6.00
    4.00

```

Workspace

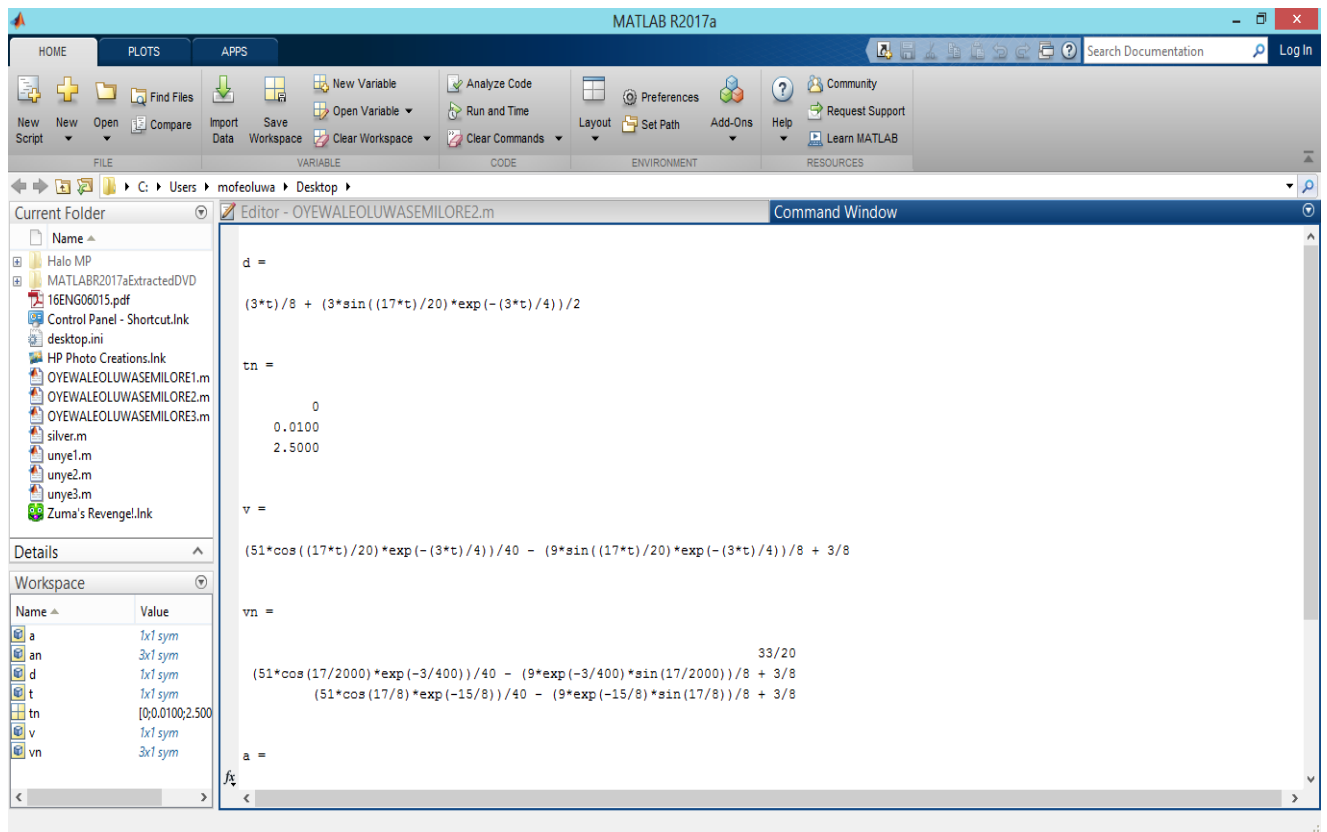
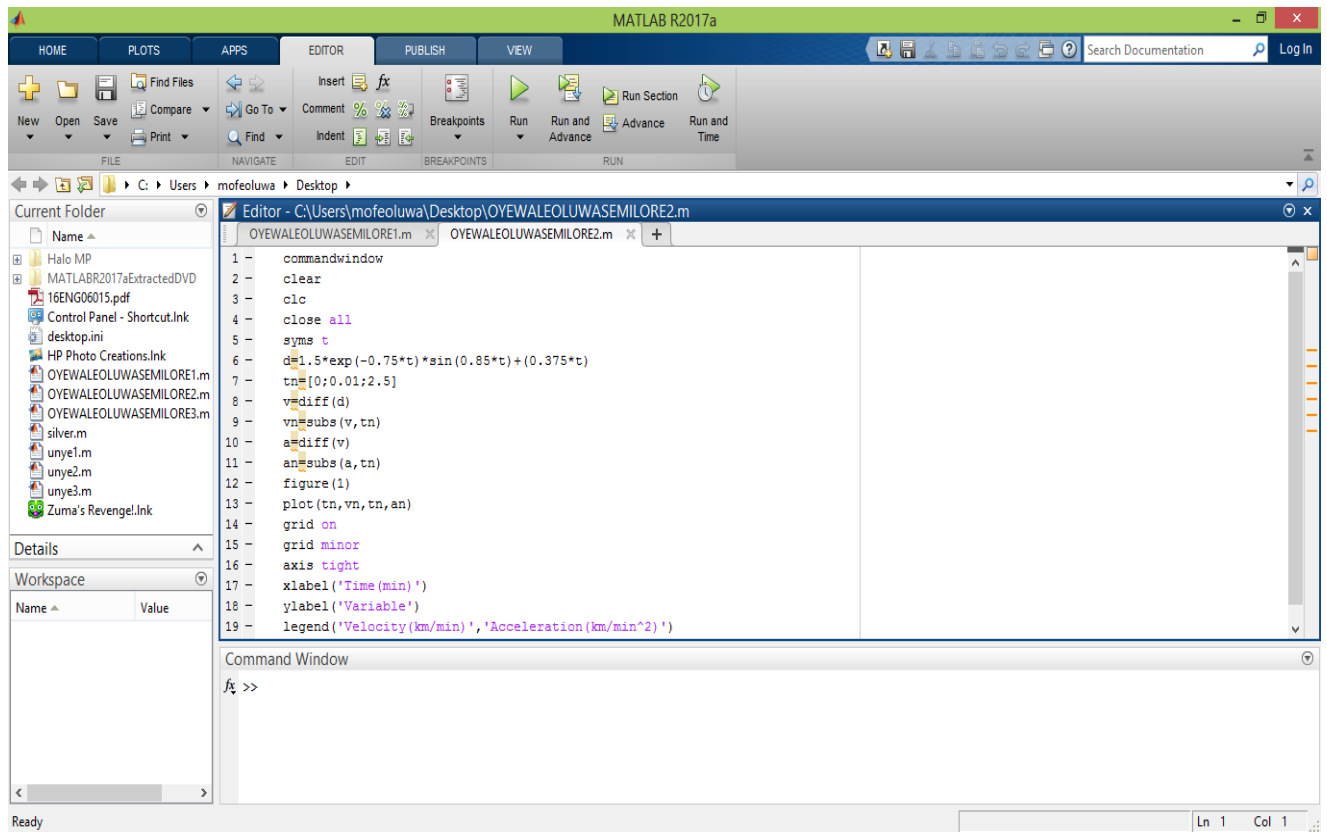
Name	Value
A	4x4 double
b	[-4;2;6;4]
x	[4;-9.7145e-17;

Command Window

```

x =
     4.00
    -0.00
     2.00
     6.00

```



MATLAB R2017a

HOME PLOTS APPS

File Edit View Insert Tools Desktop Window Help

Current Folder: C:\Users\mofeoluwa\Desktop

Workspace:

Name	Value
a	1x1 sym
an	3x1 sym
d	1x1 sym
t	1x1 sym
tn	[0;0.0100;2.500]
v	1x1 sym
vn	3x1 sym

Editor - OYEWALEOLUWASEMILORE2.m

```

0.0100
2.5000

v =
(51*cos((17*t)/20)*exp(-(3*t)/4))/40 - (9*sin((17*t)/20)*exp(-(3*t)/4))/8 + 3/8

vn =
33/20
(51*cos(17/2000)*exp(-3/400))/40 - (9*exp(-3/400)*sin(17/2000))/8 + 3/8
(51*cos(17/8)*exp(-15/8))/40 - (9*exp(-15/8)*sin(17/8))/8 + 3/8

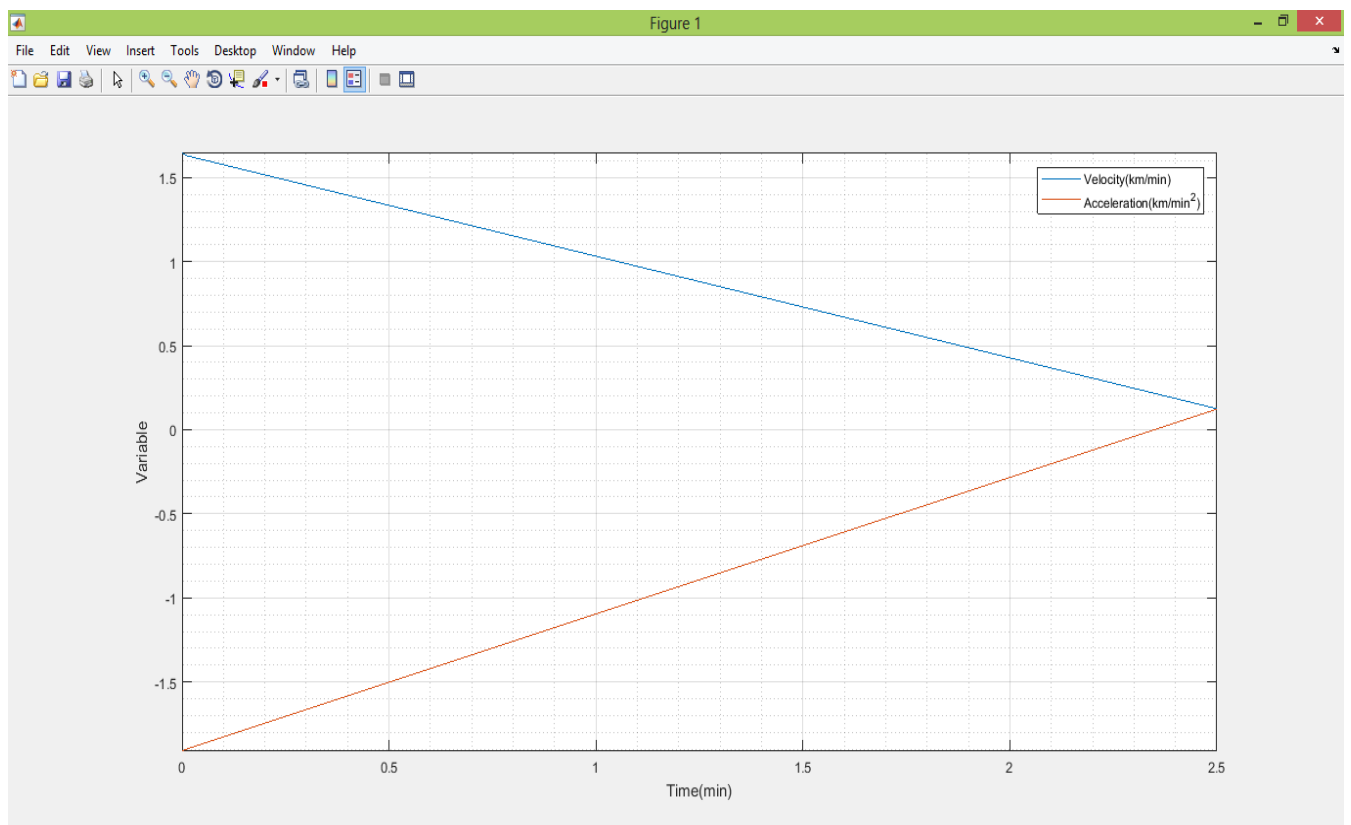
a =
- (153*cos((17*t)/20)*exp(-(3*t)/4))/80 - (6*sin((17*t)/20)*exp(-(3*t)/4))/25

an =
-153/80
- (153*cos(17/2000)*exp(-3/400))/80 - (6*exp(-3/400)*sin(17/2000))/25
- (153*cos(17/8)*exp(-15/8))/80 - (6*exp(-15/8)*sin(17/8))/25

ft

```

Command Window



MATLAB R2017a

HOME PLOTS APPS EDITOR PUBLISH VIEW

New Open Save Find Files Compare Print Go To Find Breakpoints Run Run and Advance Run and Time

FILE NAVIGATE EDIT BREAKPOINTS RUN

C:\Users\mofeoluwa\Desktop

Editor - OYEWALEOLUWASEMILORE3.m

```
1 commandwindow
2 clear
3 clc
4 format short g
5 close all
6 syms x
7 a=vpa(pi)
8 y=5*sin(5*x)^5
9 v=a*(int(y^2,0,a))
10 v=double(v)
```

Current Folder

- Halo MP
- MATLABR2017aExtractedDVD
- 16ENG06015.pdf
- Control Panel - Shortcut.Ink
- desktop.ini
- HP Photo Creations.Ink
- OYEWALEOLUWASEMILORE1.m
- OYEWALEOLUWASEMILORE2.m
- OYEWALEOLUWASEMILORE3.m
- silver.m
- unye1.m
- unye2.m
- unye3.m
- Zuma's Revenge!.Ink

Details

Workspace

Name	Value
a	1x1 sym
v	60.7212
x	1x1 sym
y	1x1 sym

Ln 1 Col 1

