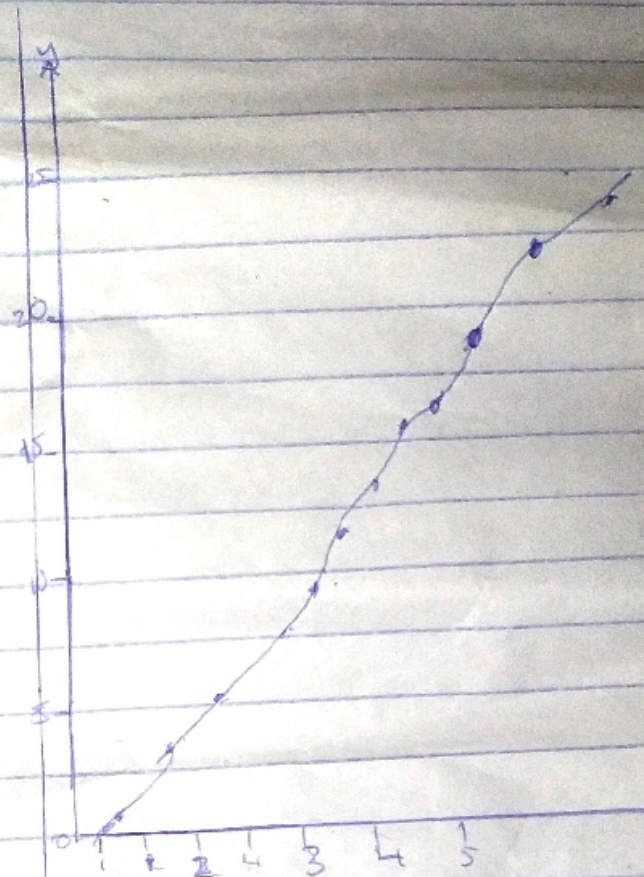


$$\begin{cases} x_1 - 2x_2 - x_3 + 3x_4 = 10 \\ 2x_1 - 3x_2 + x_4 = 3 \\ x_1 - 4x_3 - 2x_4 = 3 \\ -2x_2 + 3x_3 + 3x_4 = 2 \end{cases}$$

$$A = \begin{bmatrix} 1 & -2 & -1 & 3 \\ 2 & -3 & 0 & 1 \\ 1 & 0 & -4 & -2 \\ 0 & -2 & 3 & 3 \end{bmatrix} \quad B = \begin{bmatrix} 10 \\ 3 \\ 3 \\ 2 \end{bmatrix}$$

$$C = A^{-1} \cdot B$$

$$C = \begin{bmatrix} -1 \\ 2 \\ 3 \\ 4 \end{bmatrix}$$



2	t	y	t	y	#	y
	0	-1.000	15	18637	30	3.584
	01	-0.855	16	2.0935	31	5.8473
	02	-0.7024	17	2.3266	32	6.116
	03	-0.5413	18	2.5677	33	6.378
	04	-0.3724	19	2.8071	34	6.6453
	05	-0.1969	20	3.0441	35	6.9106
	06	-0.0146	21	3.2787	36	7.1727
	07	0.1718	22	3.5207	37	7.4307
	08	0.3691	23	3.7702	38	7.7167
	09	0.5679	24	4.0376	39	7.9866
	10	0.7727	25	4.2929	40	8.2563
	11	0.9821	26	4.5567	41	8.527
	12	1.1966	27	4.8030	42	8.798
	13	1.415	28	5.0617	43	9.0692
	14	1.6375	29	5.3223	44	4.3402