

Value

4x4 double

[272;275;270;277]

[10;8;3;-7]

[-1.0000;2.0000;-3.0000...

Command Window

```
2     3     0     1
1     0    -4    -2
0    -1     3     1
```

fx



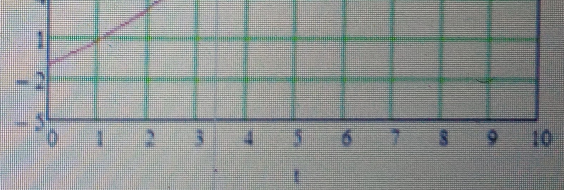
EN
IN

$$D = B \cdot C$$

$$D = \begin{pmatrix} -1 \\ 2 \\ -3 \\ 4 \end{pmatrix}$$

0.9
1
1.1
1.2
1.3
1.4

0.568
0.773
0.982
1.197
1.415
1.637



<
 Press F1 for help.