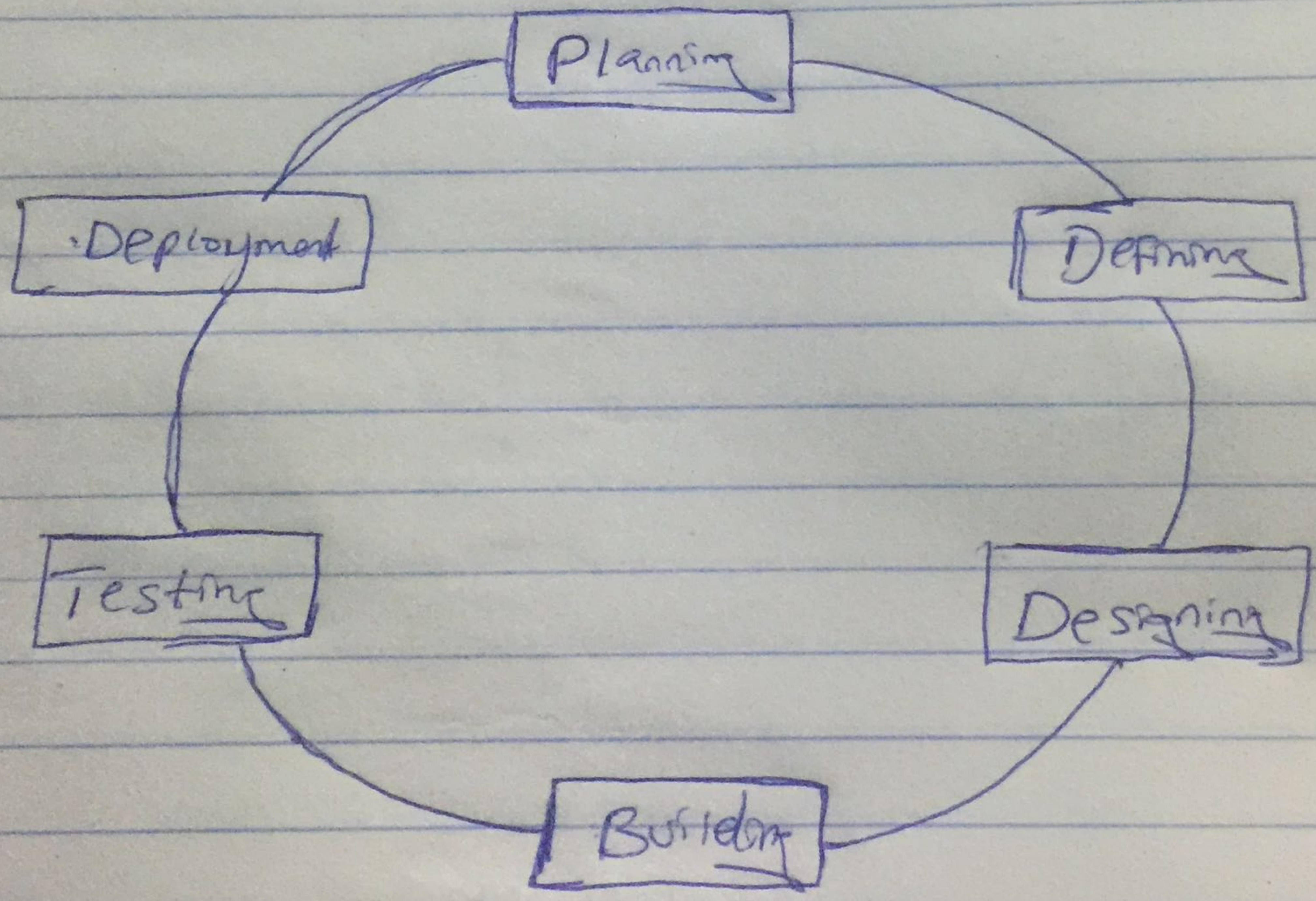


OLuwafemi Olorunsogo Benjamin  
18/ENG06/059  
Mechanical Engineering

- 1] Software development cycle
- 1] planning and Requirement Analysis
- 2] Defining Requirements
- 3] Designing the product architecture
- 4] Building or Developing the product
- 5] Testing the product
- 6] Deployment in the market and maintenance

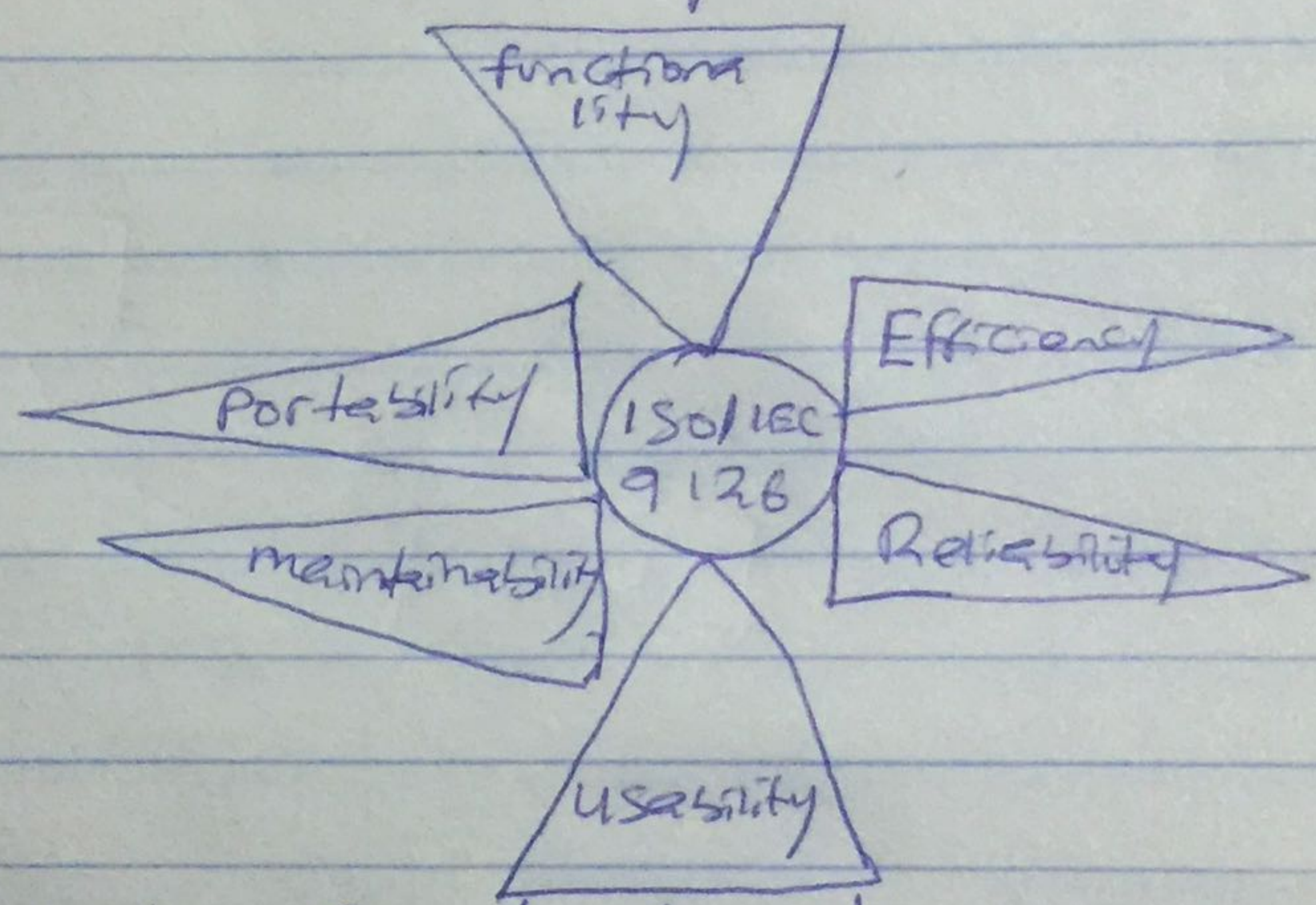


3] It required to give the reasons of selecting Computer hardware and Software for the Organization an important management decision.

Computer hardware is the physical, the mechanical, magnetic, electronic, and electrical components making up a computer system.

Examples computer hardware are Central processing unit (CPU), Random Access memory (RAM), hard disks, CD-ROM Compact Disk Read-Only memory, keyboards, mice, printers, modem, router and e.t.c

### Computer software features

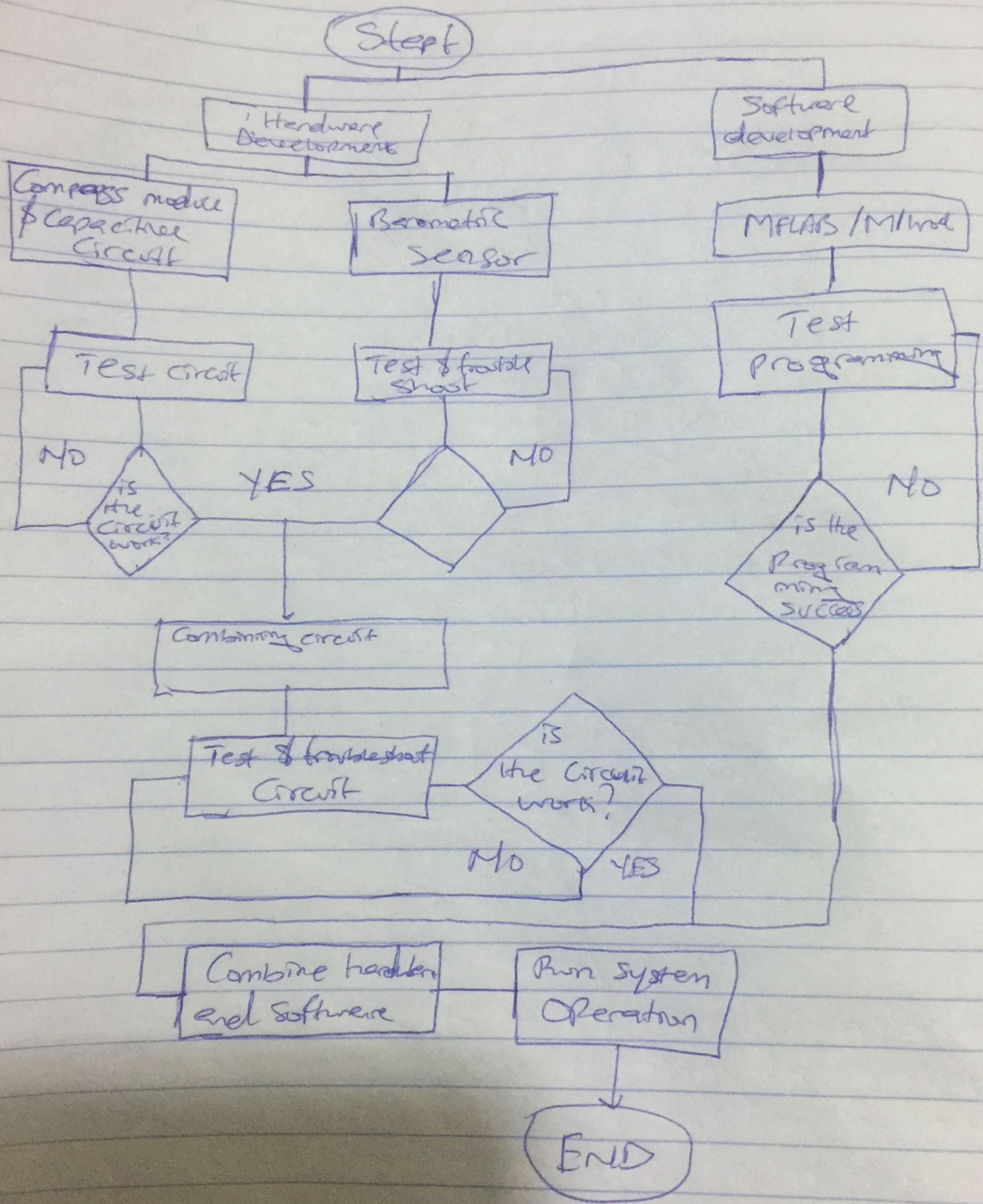


Functionality: It refers to the degree of performance of the software against its intended purpose.

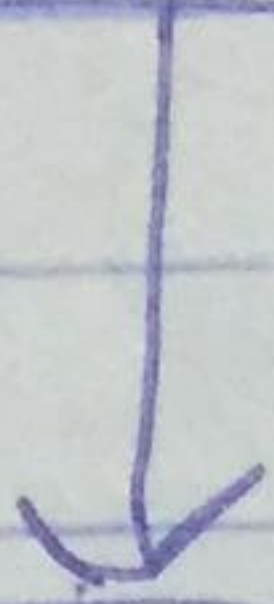
Reliability: A set of attribute that bear on capability of software to maintain its level of performance under the given condition for a stated period of time.

Efficiency: It refers to the ability of the software to use system resources in the most effective and efficient manner.

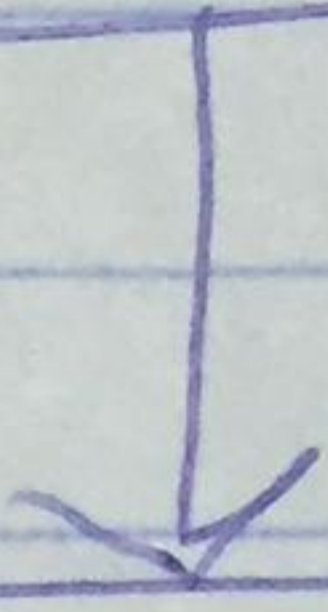
Usability: It refers to the extent to which the software can be used with ease.



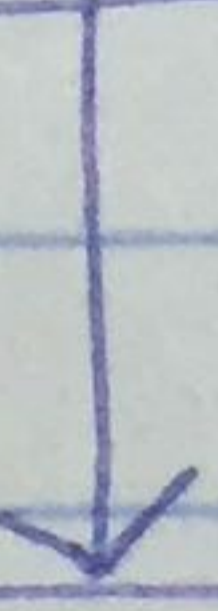
Information gathering



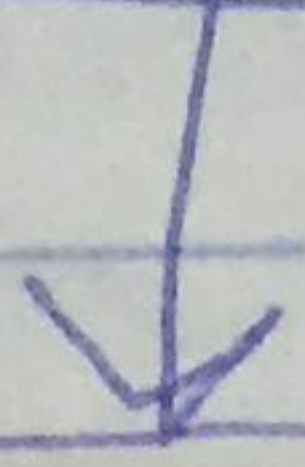
Awareness building



C81 development



Preference Elicitation



Application