

NAME:OBEMBE TOMILAYO

MATNO:18/ENG06/050

DEPT:MECHANICAL ENGINEERING

1.CONCEPTUALIZATION: The concept of a web designed application is to be implemented, the software is to be designed with the ability of detecting the symptoms of the virus, display the rate of infection on an led display, store the processed information and transmit the data wirelessly to the web to gain remote access to the stored data

2.SPECIFICATIONS: the application should be able to do the following

1. check for symptoms of the virus e.g rate of breathing through the pulse and temperature of the patient.
2. display the measured value of each vital signs on the small led screen with light indicator showing the rate of degree of infection, if temperature ranges from(36.1-37) degree celcius and heart rate is within 60-100 per minute, display "normal" and the light indicator displays green. And if above 38 degree celcius and the heart rate is ABOVE 100 beats per minute display 'infected with the Indicator displaying red, but if one if the above condition is present and the other isn't present display 'further testing required' and the led indicator showing yellow
3. display rate of infection after running tests
4. store data of each patient
5. upload data stored to the organisations server

Hardware: it should contain An infrared thermometer, standard electrocardiogram , a small LED monitor for display and light indicator.

3. ALGORITHM/FLOW CHART

ASSIGNING A=TEMPERATURE B= HEART RATE

STEP1: START

STEP2: SCAN TEMPERATURE

STEP3: CHECK HEART RATE

STEP4: GET THE TEMPERATURE

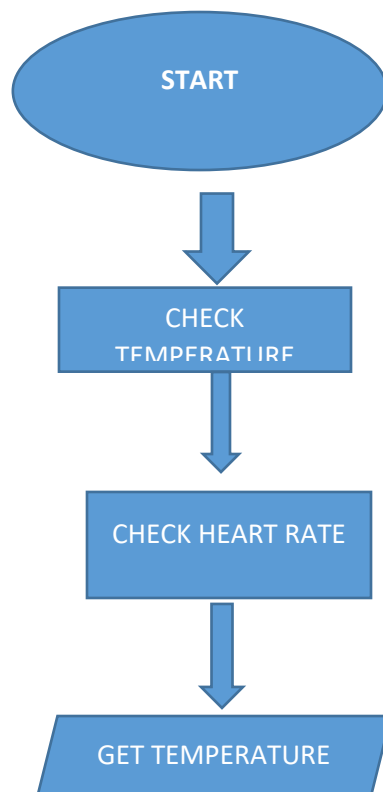
STEP 5:GET THE HEART RATE

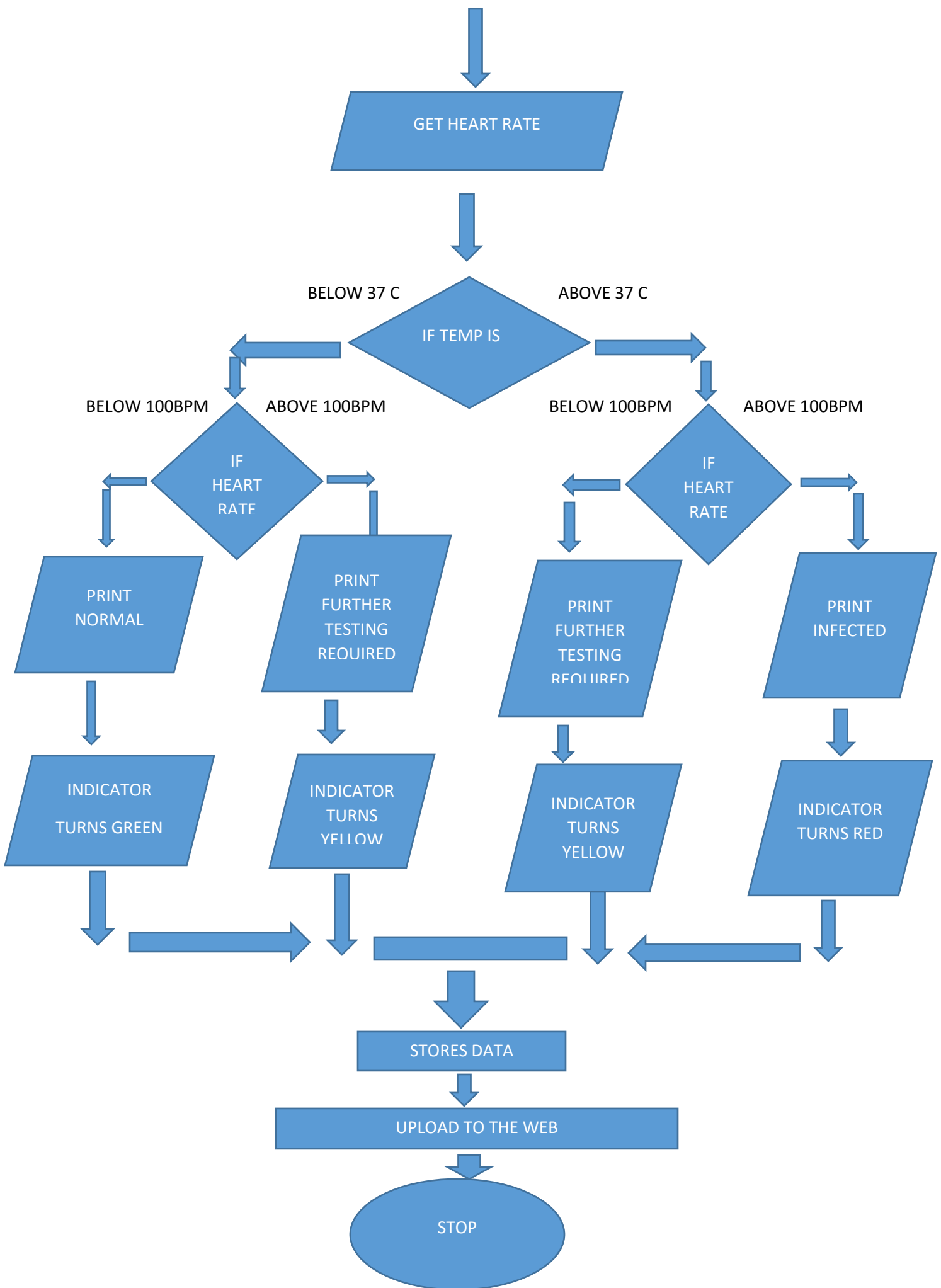
STEP 6: IF $A > 37$ AND $B > 100$

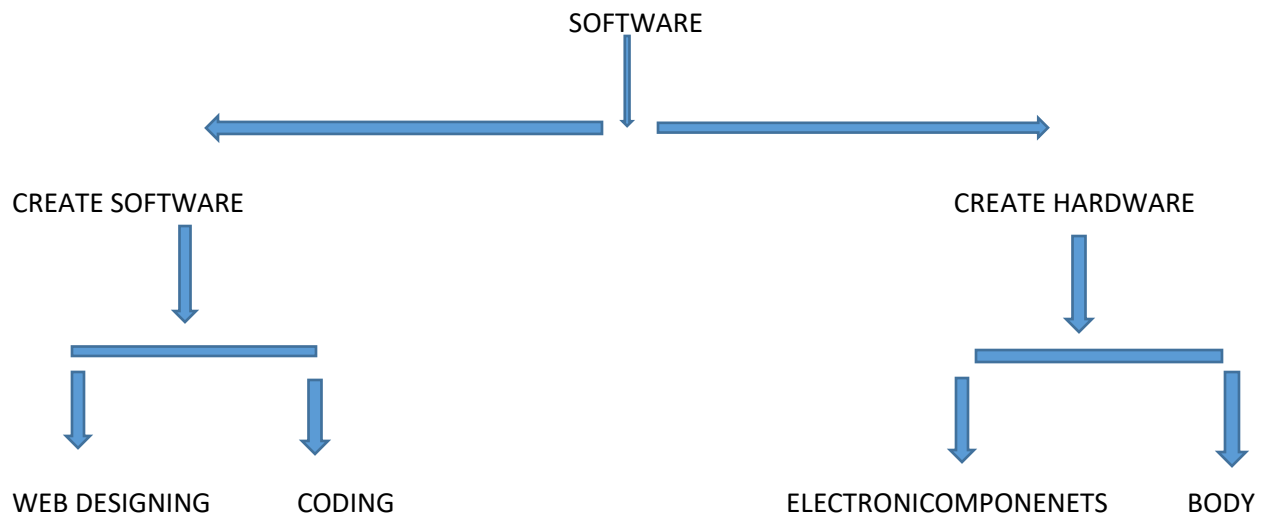
STEP 7: PRINT INFECTED

STEP 8: INDICATOR SHOWS RED
STEP 9: ELSE IF $A < 37$ AND $B < 100$
STEP 10: PRINT NORMAL
STEP 11: INDICATOR SHOWS GREEN
STEP 12: ELSE IF $A > 37$ AND $B < 100$
STEP 13: PRINT FURTHER TESTING REQUIRED
STEP 14: INDICATOR SHOWS YELLOW
STEP 15: ELSE IF $A < 37$ AND $B > 100$
STEP 16 : PRINT FURTHER TESTING REQUIRED
STEP 17: INDICATOR SHOWS YELLOW
STEP 18: STORE DATA
STEP 19: UPLOAD DATA TO THE ORGANIZATIONS SERVER
STEP 20: STOP

FLOW CHART







TOP DOWN DESIGN