

Nwale Ugochukwu Chimzindu

18/EUG-06/045

Mechanical Engineering

EUG 224

Algorithms

1) Design the application following the software development cycle
Software development life cycle is a process used by software industry to design, develop and test high quality softwares. The aim is to produce a high-quality software that meets or exceeds customer expectations e.g. In this pandemic times (Corona virus) A software that can detect, display, rate (degree of infection), store, transmit the data and access data via web.

2) Features of the hardware

1) Temperature sensitivity :- This help you to read the temperature of the patient, if its high or low. If its high the patient has to be tested for the virus.

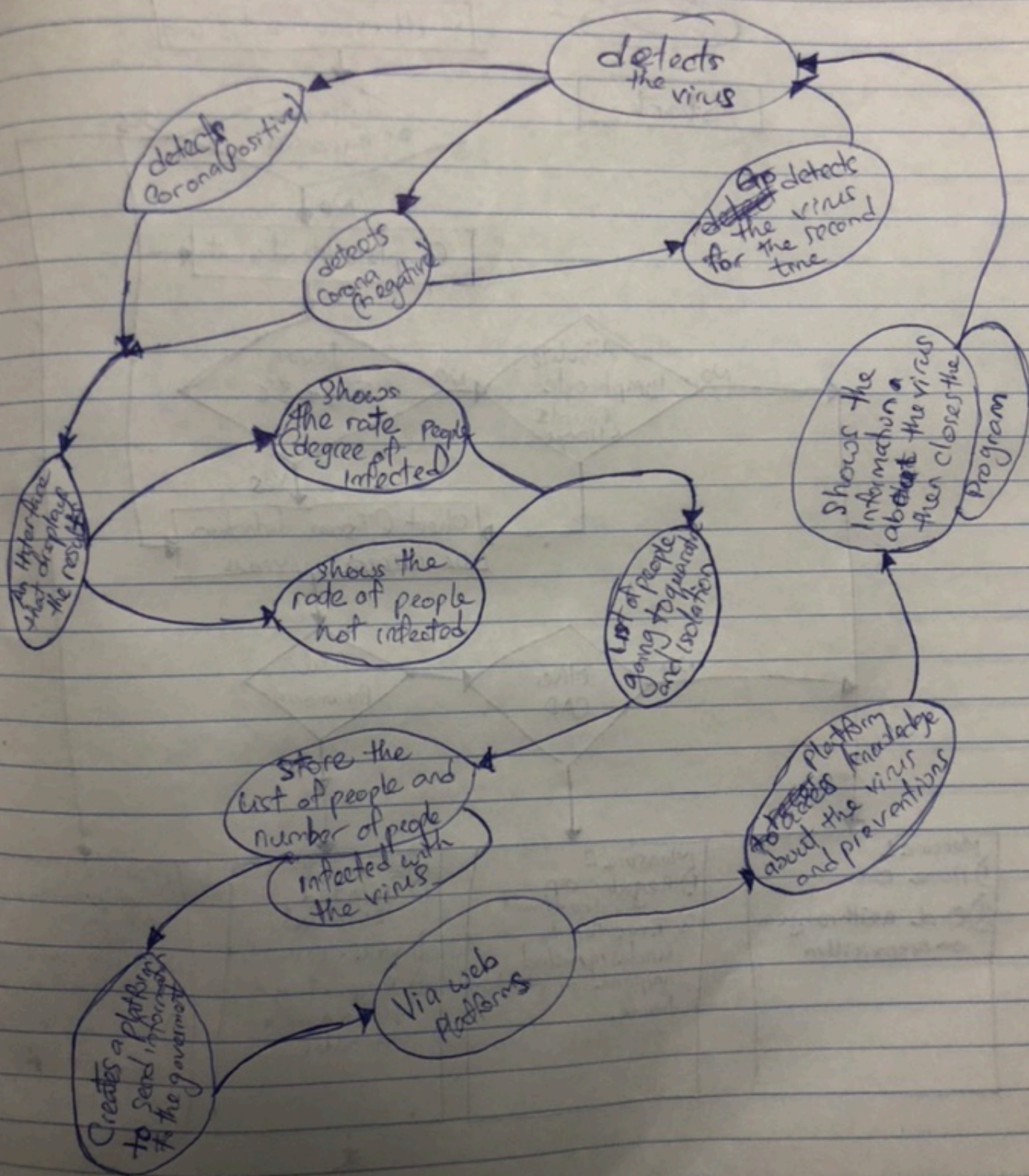
2) Corona Virus tester :- This is a machine that tests your blood if your negative or positive of the virus, then uploads it to the platform in the software.

Features of the Software

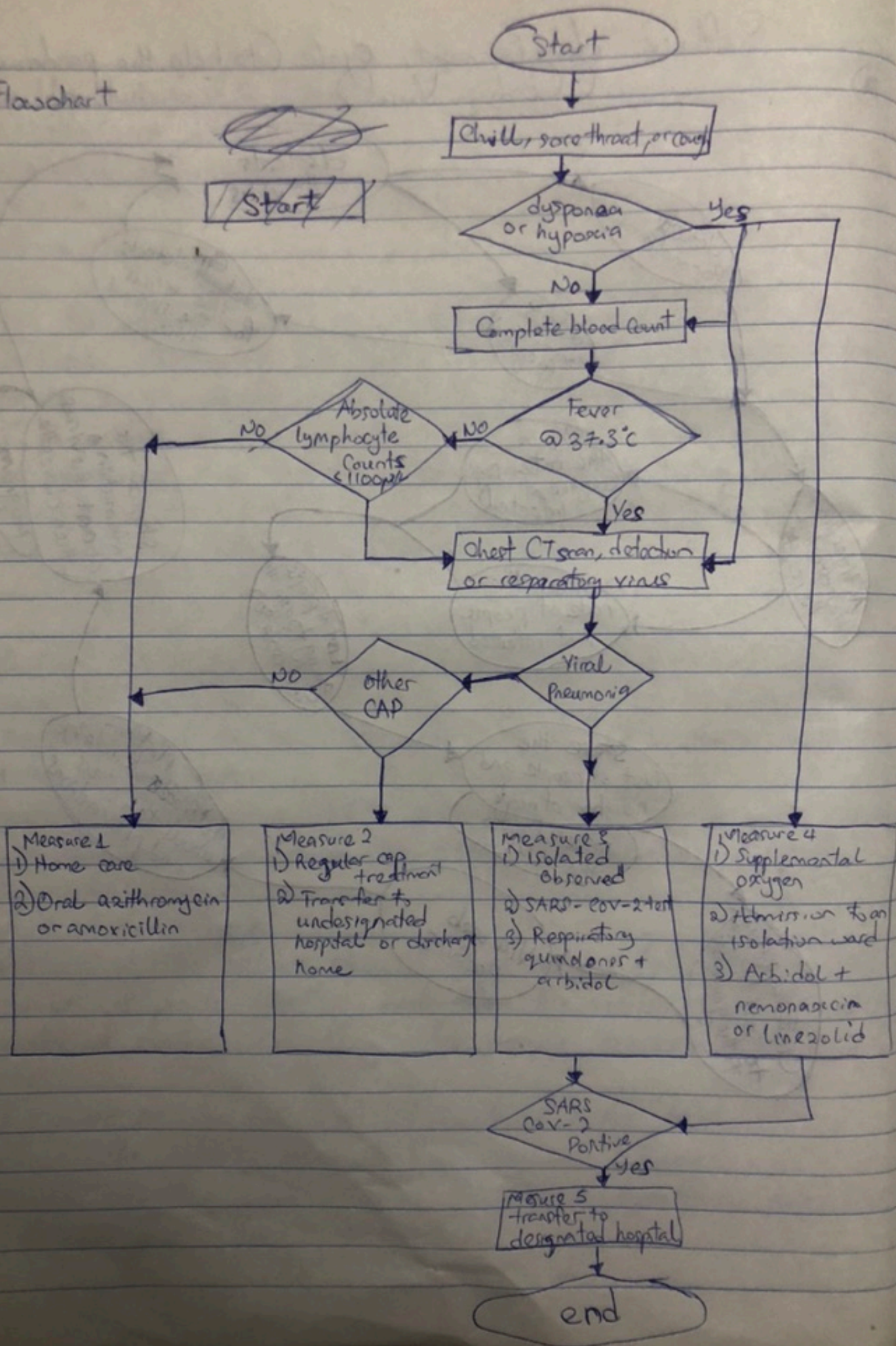
1) Spreadsheet :- The software should have a spreadsheet to record the number of people infected, ~~and~~ the number of people negative, the number of deaths and the number people recovered and their details.

2) Web browser :- The results are being stored in the hardware and uploaded to the internet so people can receive information and a platform to educate others on this corona virus, symptoms, preventions and etc.

Software development cycle (to help the pandemic) (Corona Virus)



3) Flowchart



4) Top down design

