

ENG 224

1.

- a) Analyse: we have to analyze the covid 19 virus pandemic, the cause of the virus and how to tackle it. And also how to detect symptoms.
- b) specification: dividing the system into hardware and software
- c) design: it determines the nature of the input and output layout with the process steps required.
- d) implementation: using documents to write the codes created for the design acting as the input.
- e) testing and debugging : when the developed code is tested to detect the problems, and try to fix them.
- f) release and update: released for usage and update based on new features and bug fixes.

2. The software features:-

The application is developed on an algorithm system. And it will involve the use of

- Graphic user interface(GUI)
- Command buttons
- Switch buttons
- Text views
- Timer
- Access control

Hardware features:-

The application is been developed on 50 Tb ram, fast processor,etc

It will also require:

- Air pump
- Pipes
- Temperature determinant
- Oxygen tank
- Cooler.

3.

Let n= negative

P= positive

Step 1: start

Step 2: detect temperature

Step 3: read temperature

Step 4: if temperature>40 degrees

Print "positive"

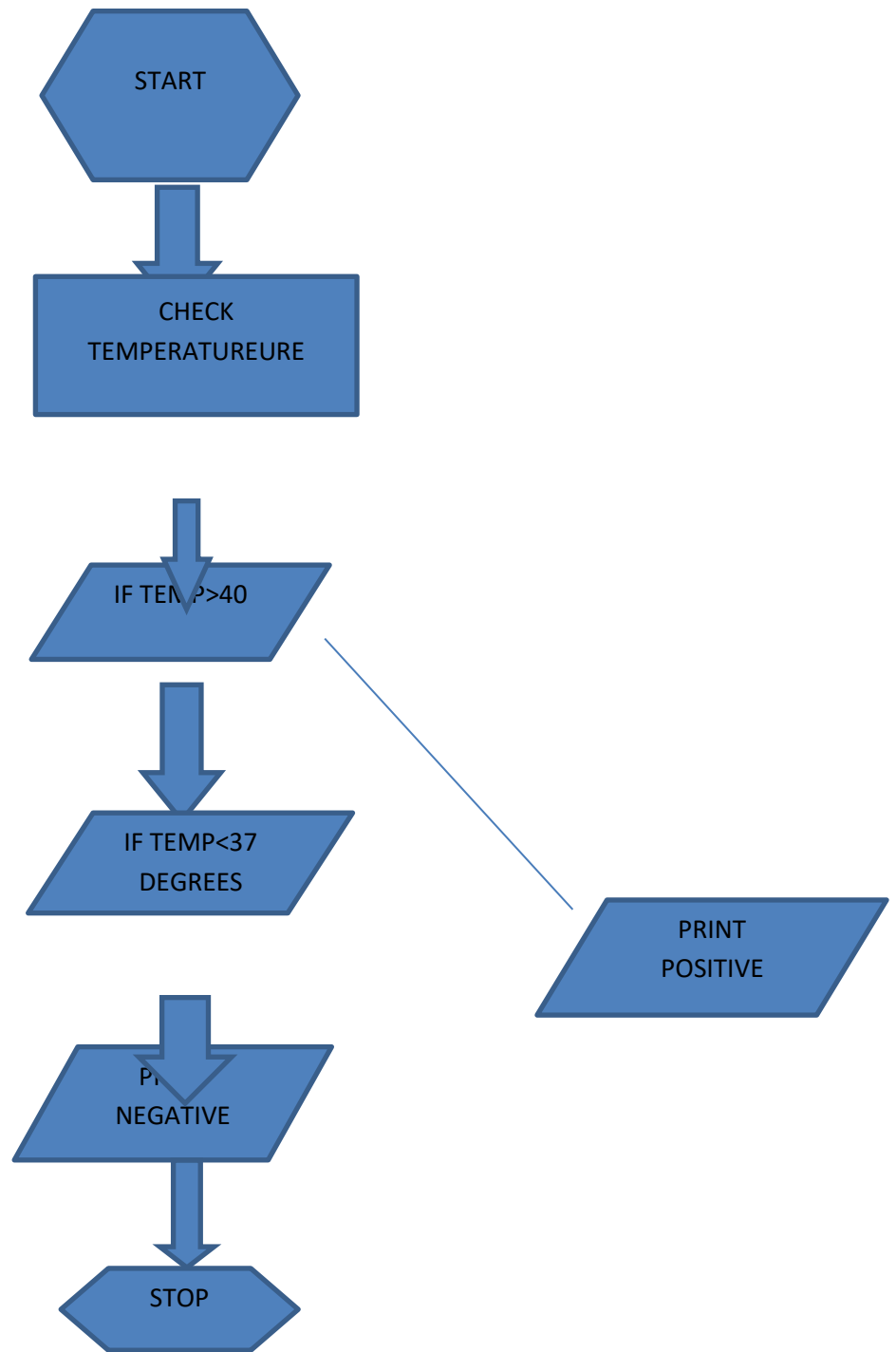
Else

If temperature<37

Print "negative"

Step 5: stop

Flowchart.



4. TOP DOWN DESIGN

