

NAME: MEZE HANNAH CHIBUEZE

MAT NO:18/ENG05/031

DEPT: MECHATRONICS ENGINEERING

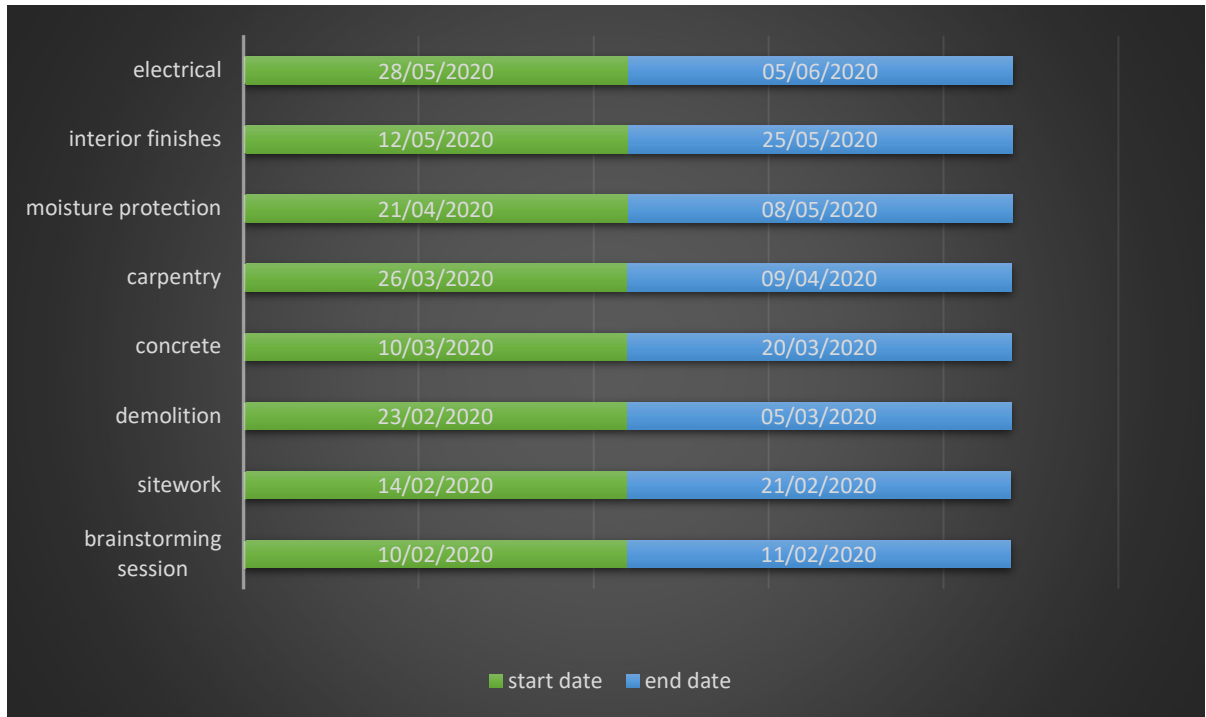
COURSE: ENG 284

THE ALFA BELGORE REHABILITATION PROJECT

In the renovation of a building, various necessary actions must occur. The Alfa Belgore hall can sit a crowd of immense capacity but still not enough to accommodate the entire school's population. For this particular reason the hall need to be renovated hence the project of rehabilitation.

SCOPE OF WORK

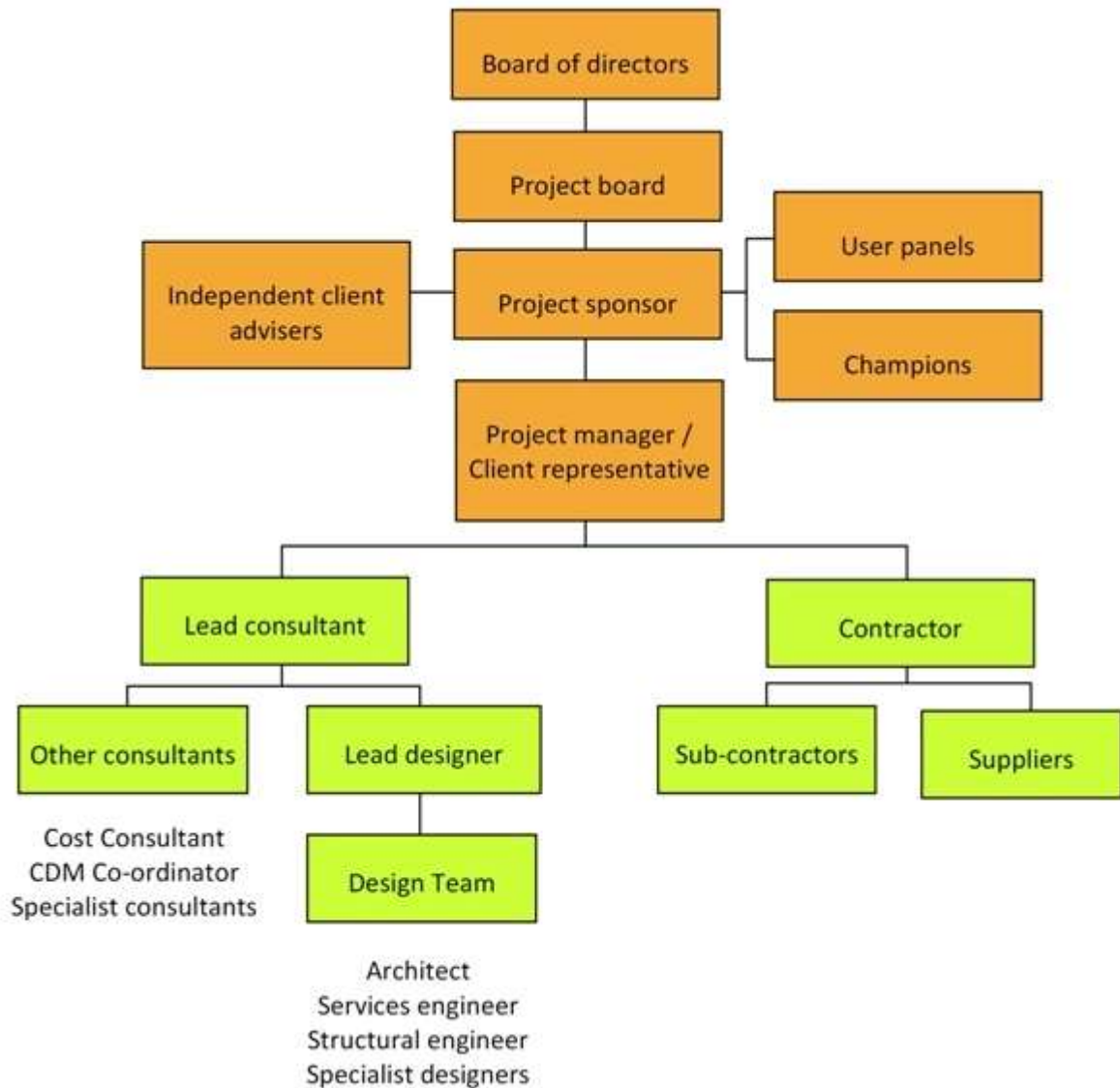
- Brainstorming sessions: discussion of requirements needed in the projects, funds, personnels invovled in the project.
- Sitework/Preparation: ensure that all environmental requirements are included. Dust control, special inspection and monitoring.
- Demolition: safety issues,schedule of demolition,removal of materials.
- Concrete: design mix obligations, reports, approvals, proper stripping of formwork with obligation for surface consistency.
- Carpentry: material certifications, installations specifics; doors, windows,etc.
- Moisture protection: certification of all roofing requirements, review of installed work
- Interior finishes: mock up requirements, cleaning and sealing of the finishes.
- Electrical: lighting and power requirements.



THE GANTT CHART

HUMAN RESOURCES NEEDED AND PROJECT TEAM

The structure and composition of the project team tends to change through the duration of the project; some team members might only have a very brief involvement, bringing specialist knowledge or supplying specialist components during a particular phase, whilst others, such as the client, project managers or lead consultants may be involved for many years.



REASON FOR SECURING THE SITE

- The site would be secured in order to prevent dangerous object from falling on students or passersby. The chosen material was roofing sheets and bamboo sticks to support. This also prevents any potential lawsuits, in the sense that all safety protocols were observed.

BILL OF ENGINEERING MEASUREMENT AND EVALUATION

The total estimated cost (tec)= ₦7,000,000

Description	% of tec	Cost(₦)
Miscellaneous	10% of tec	₦700,000
Consultancy fees	15% of tec	₦1,05,000
Site preparations and clearing after completion	5% of tec	₦350,000
Transport cost	12% of tec	₦840,000
Profit	20% of tec	₦1,400,000

PAYMENT SCHEDULE

Still using the above total estimated cost (tec),

Description	% of tec	Cost(₦)
Mobilisation	30% of tec	₦2,100,000
50% completion	30% of tec	₦2,100,000
Completion and hand over.	40% of tec	₦2,800,000
6 month defect liability period	10% of tec	₦700,000

Billing Of Engineering Measurement And Evaluation(BEME):

Is a tool used before, during and post-construction to assess and value the cost of construction works. This. includes the cost of materials, labor, equipment and all/any other resource(s) required for the success of.

Defect Liability Period: is a period of time following practical completion during which a contractor remains liable under the building contract for dealing with any defects which become apparent. Depending on the form of contract you are reading, it may also be referred to as a rectification period or defects correction period. A defects liability period is usually a period of around six or 12 months but it can vary depending on the contract used.

Lead Consultant: **is the consultant** that directs the work of the **consultant** team and **is the** main point of contact for communication between the client and the **consultant** team, except for on significant design issues where the **lead** designer may become the main point of contact.

Project Life Cycle: the Project Life Cycle provides a framework for managing any type of project within a business. Leaders in project management have conducted research to determine the best process by which to run projects. It has been found that following a project life cycle is critical for any services organization. The Project Life Cycle is the standard process by which teams achieve project success.

Environment Impact Assessment(EIA): is a process of evaluating the likely **environmental impacts** of a proposed project or development, taking into account inter-related socio-economic, cultural and human-health **impacts**, both beneficial and adverse.