

AVWUNU OGHENEMARO

18/ENG06/015

ENG284

ENGINEER IN SOCIETY

MECHANICAL ENGINEERING

SCOPE OF WORK

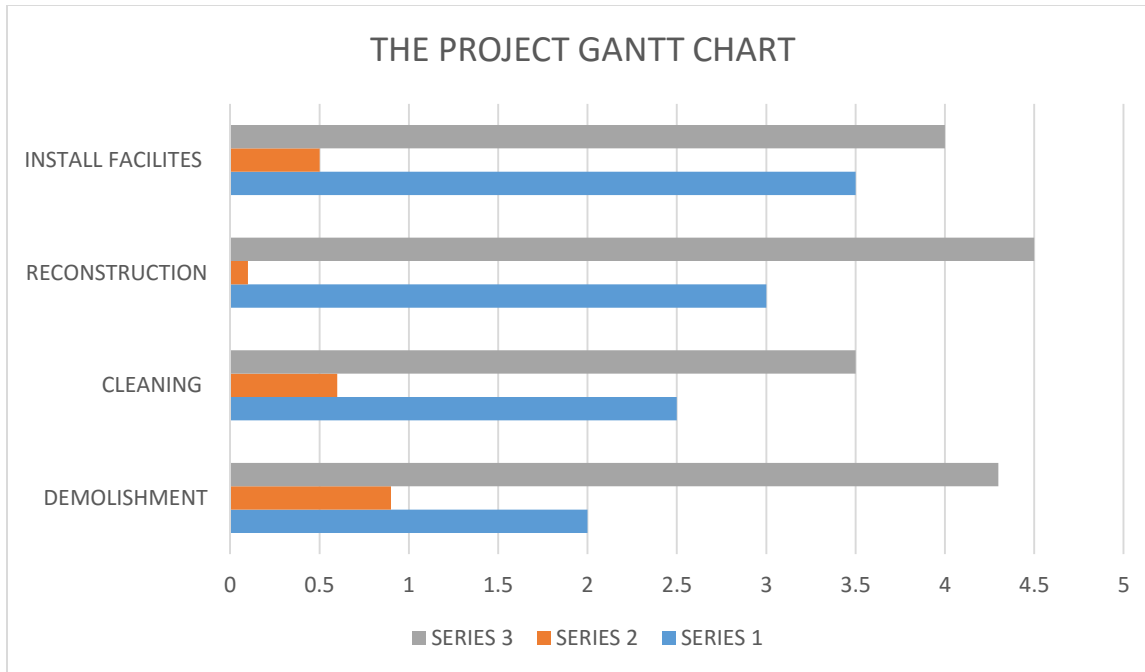
The ALFA BELGORE hall was built and designed to serve/used to carry out multipurpose task, event e.t.c. This includes general meetings (congress), conventional meetings, to conduct examinations, social amenities, indoor creativity e.t.c.

The rehabilitation project currently been conduct because it's current size can no longer accommodate the amount of individuals as it used to due to more admitted students/staff each progressing year. This begins with the following pattern;

1. Demolishment of the building

This depending on the type of renovation.

2. Clearing the broken and demolished part from the site to start the next step preparation to build.
3. Building begins
4. Installation of new facilities
5. Clearing of all used properties



PROJECT TEAM

The following consists of the project team beginning with the lead consultant

- **PROJECT MANAGER-**

The project manager plays a primary role in the project, and is responsible for its successful completion. The manager's job is to ensure that the project proceeds within the specified time frame and under the established budget, while achieving its objectives.

- **PROJECT TEAM MEMBER-**

They are the individuals who actively work on one or more phases of the project. Contributing to overall objectives, providing expertise, completing individual deliverables, documenting the process.

- **PROJECT SPONSOR-**

The project sponsor is the driver and in-house champion of the project. They make key business decision for the project, approve the project budget, ensure availability of resources, communicate the project's goals throughout the organization.

- **EXECUTIVE SPONSOR-**

Is ideally a high ranking member of management who makes the ultimate decision, with final approval on all phase, approves project deliverables and scope changes, provides additional funds for scope changes.

- **BUSINESS ANALYST-**

Defines needs and recommends solutions to make an organization. They assist in defining the project, gather requirements from business units or users, they document technical and business requirements, also verify that project deliverables meet the requirement and test solutions to validate objectives.

HUMAN RESOURCES NEEDED

- Role specification
- Role analysis
- Evaluation performance
- Legal issues
- Resolving deputes

Why the cite is secured

The site is secured so as to prevent people from using the construction site to access other buildings and theft of the building materials. Also, because of the constant state of change of the site. Risks can also change quickly, and therefore it is vital to regularly re-assess the risk and threats to the site. This is to prevent injuries to different students as it is a school construction site and it's a place where students usually use.

BEME FOR THE PROJECT

item description	quantity	unit	rate	amount
consultant fee	avg23.5	#	950	200,000
site preparation	avg23.6	mm	28000	468,400
transportation	avg23.7	#	3500	50,000
profit 10%	avg23.8	#	40000	100,000
total estimated			72,450	818,400

PAYMENT SCHEDULE

S/N	PAYMENT DESCRIPTION	PERCENT	PRICE	DATE
1	MOBILISATION PAYMENT	30%	N50,750	
2	50% PAY AT COMPLETION	30%	N60,350	06-Jun
3	FINAL PAY AT COMPLETION	40%	N40,000	04-Jul
4	RETAIN 6MONTHS DLA	10%	N90,000	AUG-FEB

What is BEME (Bill of engineering measurement and evaluation)

It is also referred to as “BILL” is a tool. Used before, during and post- construction to assess and value the cost of construction works. This include the cost of materials, labor, equipment, and any other resource(s) required for the success.

Defect liability period

This is a period of a time following practical completion during which a contractor remains liable under the building contract for dealing with any defects which becomes apparent. This occurs between six or twelve months but can vary depending on the contract used.

Lead Consultant

The lead consultant is the consultant that directs the work of the consultant team and is the main point of contact for communication

between the client and the consultant team, except for significant design issues where the lead designer may become the main point of contact.

Environment impact assessment (EIA)

Environmental assessment is the assessment of the environmental consequences of a plan, policy, program or actual project prior to the decision to move forward with the proposed action.

Project life cycle

A standard project typically has the following four major phases (each with its own agenda of tasks and issues): initiation, planning, implementation and closure. Taken together, these phases represent the path a project takes from the beginning to its end and are generally referred to as the **PROJECT LIFE CYCLE**.