

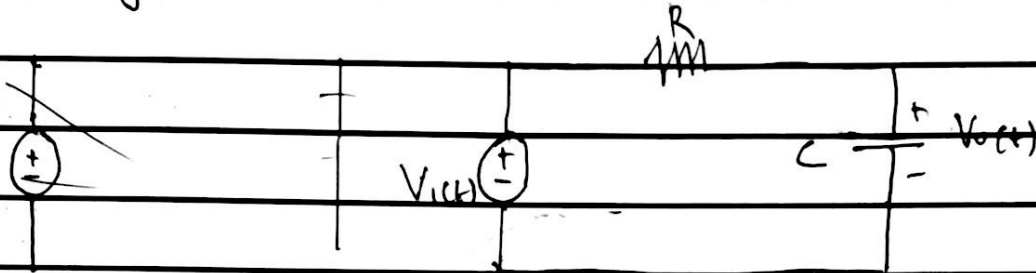
Name: Ujah- Uche Chukwura

Matric No: 17/ENG04/071

Department: Elect/Elect

Assignment

Determine the type of filter shown below and show that its cut-off frequency is $\omega_c = 1/Rc$



Solution

(a) low pass filter

(b) The transfer function

$$H(\omega) = \frac{V_o}{V_i} = \frac{1/j\omega C}{R + 1/j\omega C}$$

$$H(\omega) = \frac{1}{1 + j\omega R C}$$

$$|H(\omega)| = \frac{1}{\sqrt{1 + \omega^2 R^2 C^2}} = \frac{1}{\sqrt{2}} \quad \left(\text{magnitude of } |H(\omega)| \text{ is equated to } \frac{1}{\sqrt{2}} \text{ to obtain cut-off frequency} \right)$$

square both sides.

$$\frac{1}{1 + \omega_c^2 R^2 C^2} = \frac{1}{2}$$

$$2 = 1 + \omega_c^2 R^2 C^2$$

$$2 - 1 = \omega_c^2 R^2 C^2$$

$$1 = \omega_c^2 R^2 C^2$$

$$\omega_c^2 = \frac{1}{R^2 C^2}$$

$$\omega_c = \frac{1}{RC}$$