



Olayiwola zainab

1816ng021080

Computer engineering

T_1 of thermometer $= 10^\circ\text{C}$

T_2 of temperature $= 20^\circ\text{C}$

Time taken $= 5$ minutes $= 300$ seconds

Actual Temp $= (C_T) = 24.9^\circ\text{C}$

Q time $(Q_T) = ?$

If from T_1 to $T_2 = 20^\circ\text{C} - 10^\circ\text{C} = 10^\circ\text{C}$

and it takes 5 mins to cover 10°C

$5^\circ\text{C} = \frac{1}{2}$ of 5 mins

$= 5^\circ\text{C} = 2.5$ mins (to move from 20°C to 25°C)

$25^\circ\text{C} = 2.5$ min

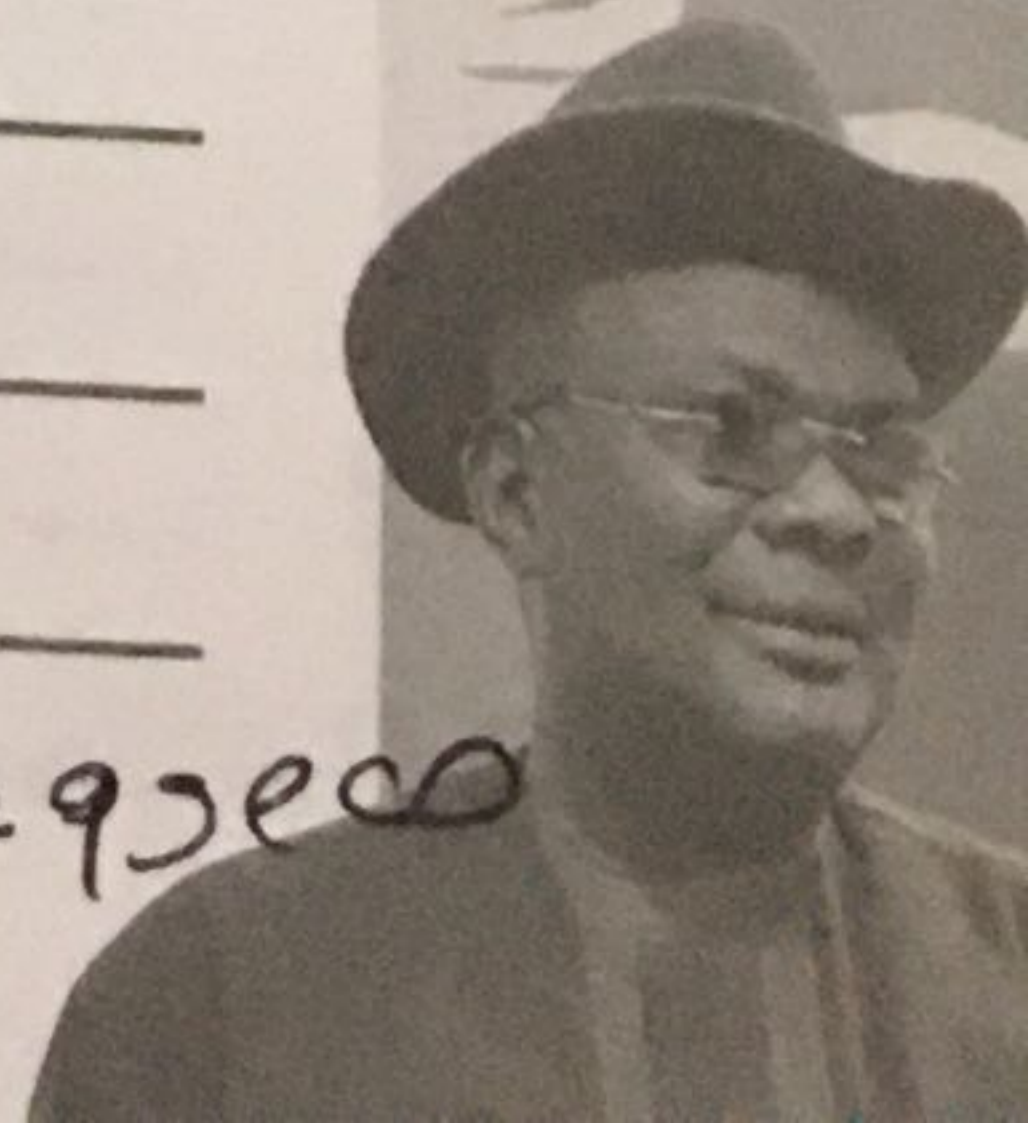
$24.9^\circ\text{C} = ?$

$$= \frac{2.5 \times 24.9}{25} \quad [25 \text{ min} = 1500 \text{ sec}]$$

$$\frac{1500 \times 24.9}{25} = 6 \times 24.9 = 149.4$$

$$\therefore 149.4 \div 60$$

$$= 2.49 \approx 2 \text{ min } 49 \text{ sec}$$

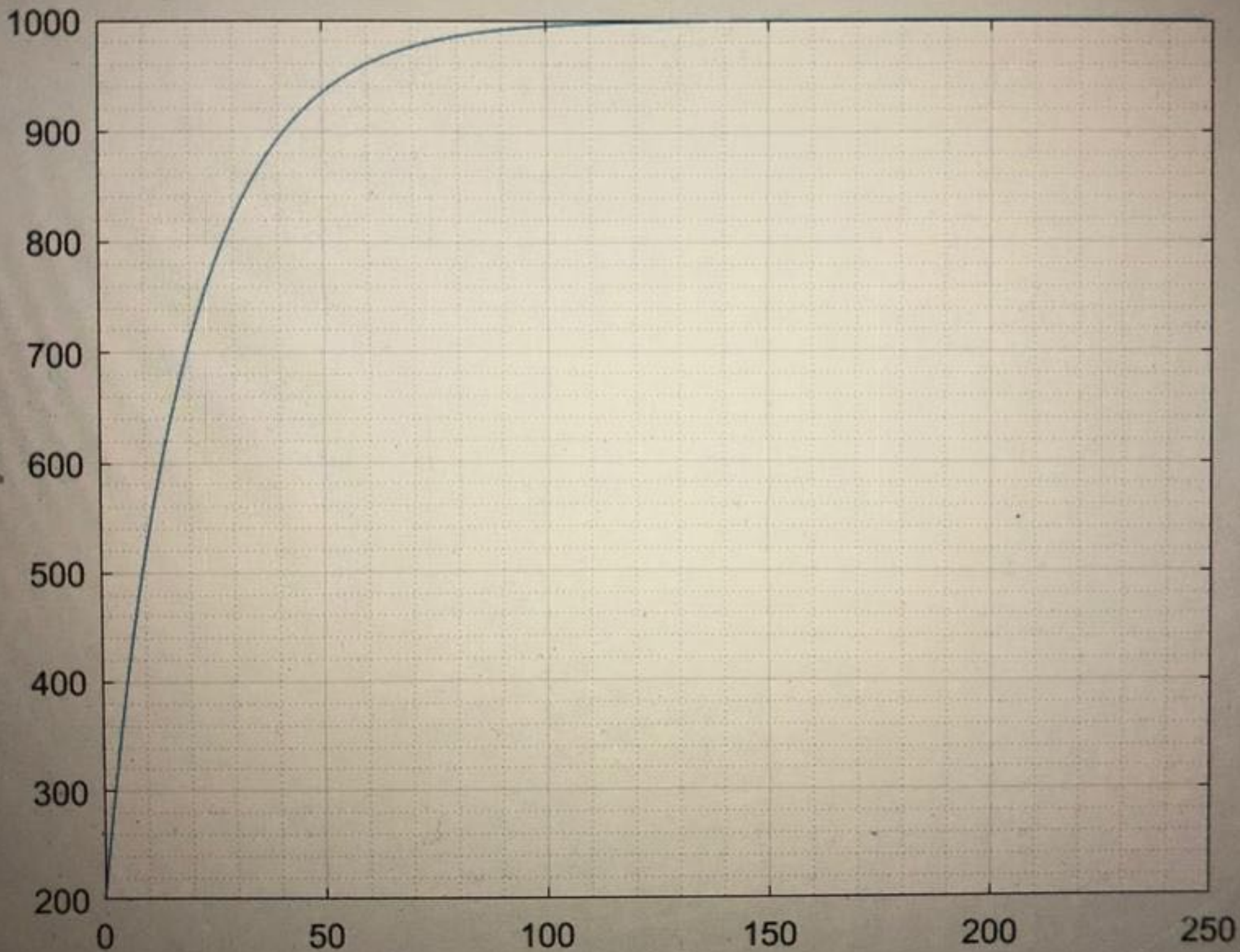
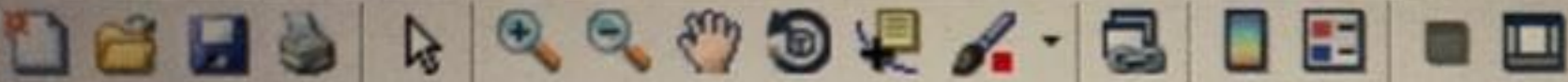


EDITOR

Figure 1



File Edit View Insert Tools Desktop Window Help



ts ▶ MATI

Ed

yi

1 -

2 -

3 -

4 -

5 -

6 -

7 -

8 -

9 -

10 -

11 -

▼

```
yimaquiz2.m x +  
- commandwindow  
- clear  
- clc  
- close all  
- format short g  
- mdata=xlsread('onlinequizdata','fluiddata')  
- x=mdata(1:2:250,1)  
- y=mdata(1:2:250,2)  
- plot(x,y)  
- grid on  
- grid minor
```

I

Command Window

86
88
90
92
94
96
98
100
102