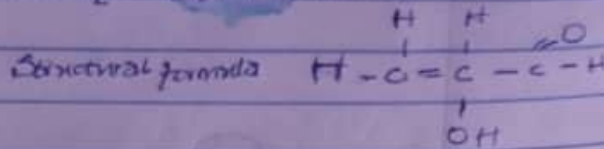
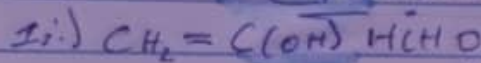


19/3/2008/1004  
BIOMEDICAL ENG

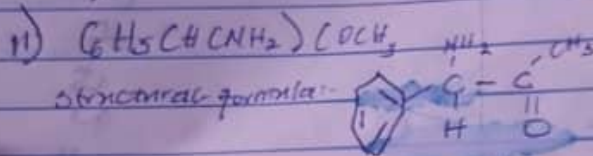
ISAAC ENE GRACE  
19/3/2008/1004

CHEMISTRY 102



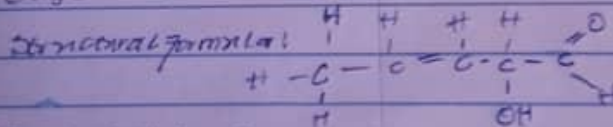
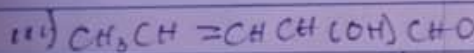
Functional group present are:

- Double bond chain (Alkene)
- OH Hydroxyl group
- $C=O$  (Alkanol)



Functional group present are:

- Phenyl group ( $C_6H_5$ ) with double bonds
- Amine
- Alkanone / Ketone ( $C=O$ )



Functional group present:

- Alkene ( $C=C$ )
- Hydroxyl group (OH)
- Alkanol ( $C=O$ )

2) Recall  $\frac{1}{l}$

$$[\alpha]_D^{25} = \frac{\alpha}{lc}$$

where  $l$  = length of sample

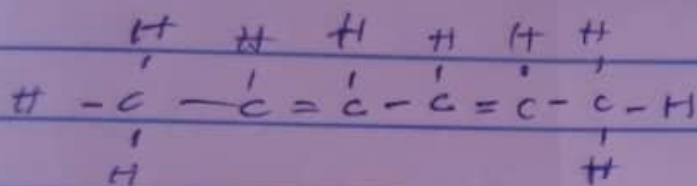
$$c = \frac{\text{mass}}{\text{volume}} \quad (g/dm^3) \text{ or } (g/mol)$$

$\alpha$  = observed rotation

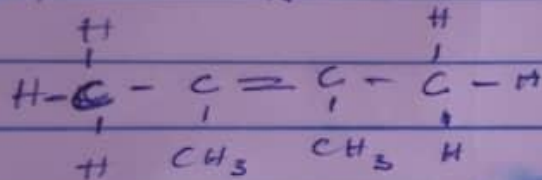
$$S_r = \frac{1-D}{1.0 \times \left( \frac{0.556}{10} \right)}$$

$$S_r = \frac{1}{0.0856} = 11.68$$

3. d) Hexa-2,4-diene



e) 2,3-Dimethylbut-2-ene



OR

