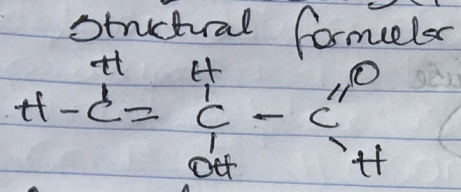
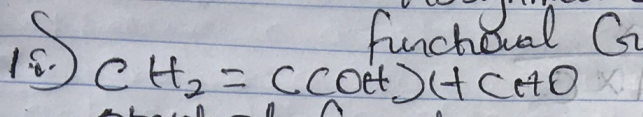
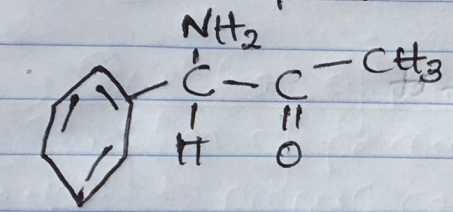
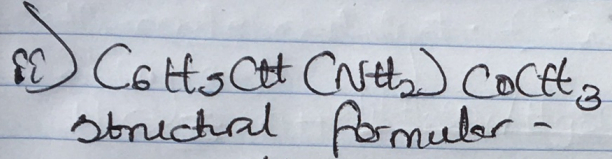


EZENWOSU OUTCUBE FALLA
 MBBS
 12/M/201/170
 CHEM 102

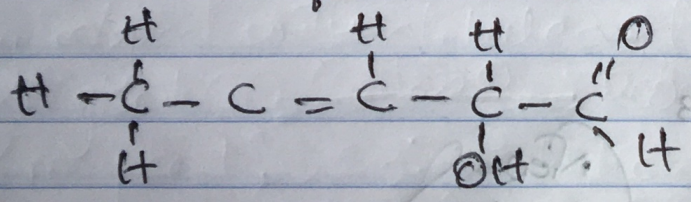
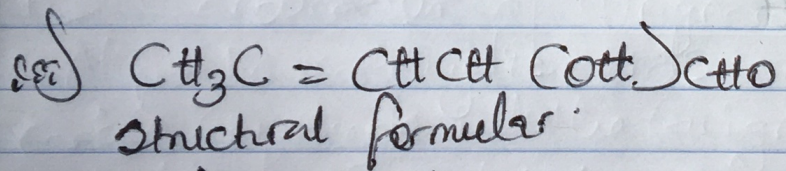
Assignment on Stereochemistry &
 functional Group



- functional groups present are:
- Double bond chain (Alkene)
 - OH (hydroxyl group)
 - $C=O$ (aldehyde)



- functional groups present are:
- Phenyl group (C_6H_5) with double bonds
 - Amine
 - Alkanone (Ketone $C=O$)



- functional groups present are!
- Alkene ($C=C$)
 - Hydroxyl group (OH)
 - Alkinal (Aldehyde $C=O$)

2.) Recall;

$$[\alpha]_D^{25} = \frac{\alpha}{l \times c}$$

where

l = length of sample tube

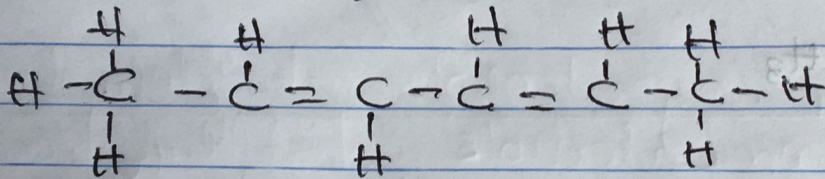
c = mass / volume (g/cm) or (g/mol)

α = observed rotation

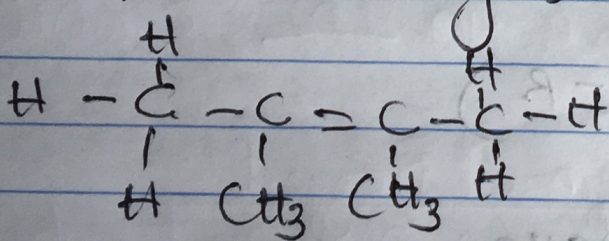
$$S_8 = \frac{1.0}{1.0 \times \left(\frac{0.856}{10}\right)}$$

$$S_8 = \frac{1}{0.0856} = \underline{\underline{11.68}}$$

3a) Hexa - 2,4-diene.



3b) 2,3-Dimethylbut-2-ene.



OR.

