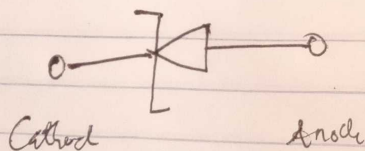
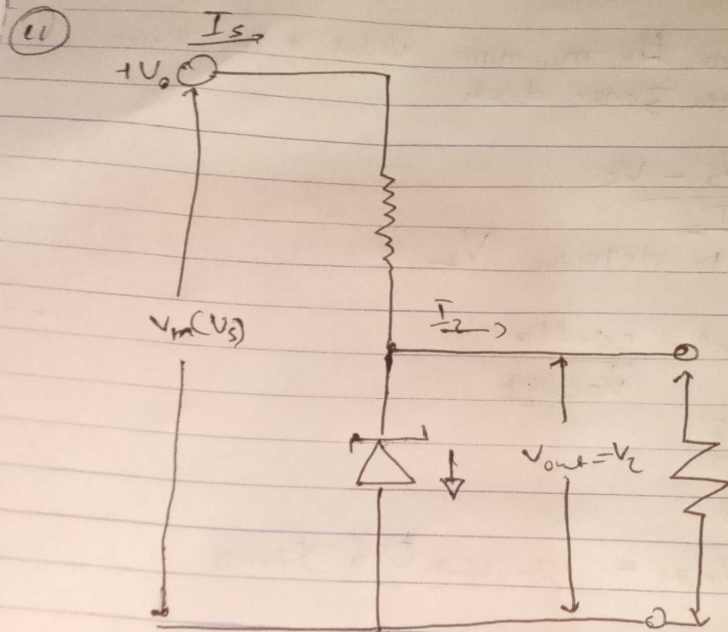


CHARLES-ANTOINET PRINCE HIBLOICOTA
USLENGO 4/024

① Zener diode as a voltage regulator. They are widely used as shunt voltage regulators to regulate voltage across small loads. Zener diodes have a sharp reverse breakdown voltage and breakdown voltage will be constant for a wide range of currents. Thus we will connect the Zener diode parallel to the load such that the applied voltage will reverse bias it. Thus if the reverse bias voltage across the Zener diode exceeds the voltage the voltage across the load will be constant.

Symbol





Zener diode Regulator Circuit

2) To determine the minimum value of the series ^{resistor} to the zener ~~diode~~

$$R_s = \frac{V_s - V_z}{I_z} \quad \text{we need to determine } V_z$$

$$P_{\text{max zener}} = \text{Watts/voltage}$$

$$500 = \frac{5}{x} \Rightarrow x = 100$$

$$V_s \leq 20 \text{ Vmax} = 12.74 = 0.637 \times 20$$

$$R_s = \frac{12.74 - 10}{500} = 4 \Omega$$

$$I_L = \frac{V_z}{R_L} = \frac{10}{500} = 20 \text{ mA}$$

$$I_z = I_s - I_L = 500 \text{ mA} - 20 \text{ mA} = 480 \text{ mA}$$

