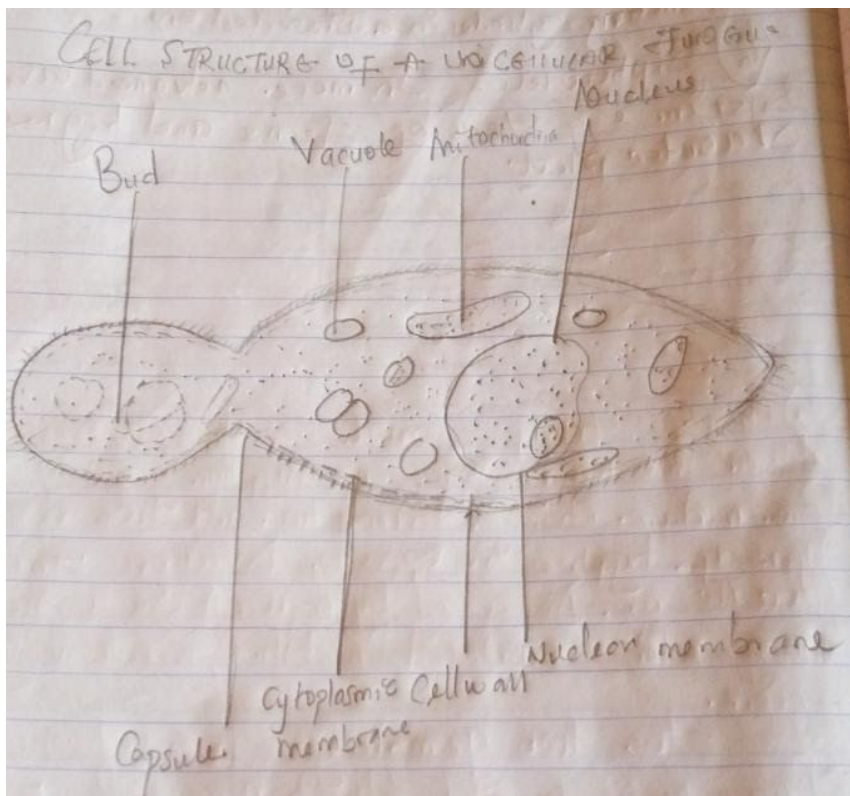
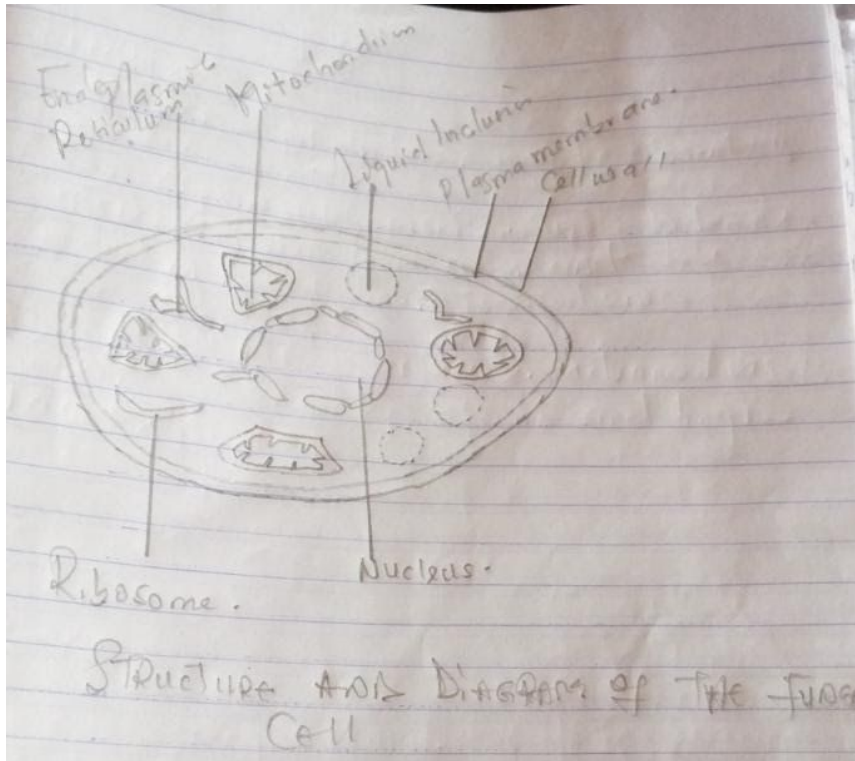


AFE BABALOLA UNIVERSITY.NAME:NTAH MFO  
NISO EBONG.  
COURSE: BIOLOGY 102  
DEPARTMENT: NURSING.  
COLLEGE: MHS.  
MATRIC: 19/MHS02/080.  
DATE: 19/MHS02/080.

1) Although we often think of fungi as organism that cause disease and Rot food. Fungi are important to human life on many levels. They influences the well-being of human population a large scale because they are part of the nutrient cycle in ecosystems. They also have other ecosystem uses , such as pesticides e.t.c.



2)



3) **Rhizopus stolonifer:** sexual reproduction occurs when two mating types of hyphae grow in the same medium. Chemical interaction in two mating types of hyphae in opposite direction. These growths are delimited by a wall such that many nuclei are isolated in what is called gametangium.

The two gametangia fuse (plasmogamy) and a zygote is formed which may undergo prolonged dormancy or resting stage. The nuclei in the zygote fuse in twos and undergoes meiosis independently. The zygote germinates under favourable conditions to produce a fungus which at maturity liberates the haploid spores.

4) They adapt in two ways:

a) They have definite structures for water and nutrient adsorption from the soil, therefore the

plant Body is divided into two (An aerial portion and a subterranean portion)The subterranean portion is the rhizoid and is not a true root as the case of land plants that are advanced.

b)The aerial portion being exposed to the atmosphere demands some modifications that prevents excessive loss of water through the body surface and some other modification that permits elimination the internal parts of the plant and the atmosphere.therefore, openings are available on the aerial parts of the plant.

5) Eusteles:in which the vascular bundles are discrete, concentric collateral bundle of xylem and phloem.

Atactosele:the vascular bundles are scattered.the nature of the vascular supply to leaves is also note worthy element of the vascular system.

Dicotyostele:vascular supply to leaves may be absent to protoseles.In siphonosteles, vascular supply to leaves is associated with leaf geeps and the conducting cylinder is a Dissected one.

Siphonostele:In more advanced vascular systeme.g stems of ferns and higher vascular plant.

6)

