

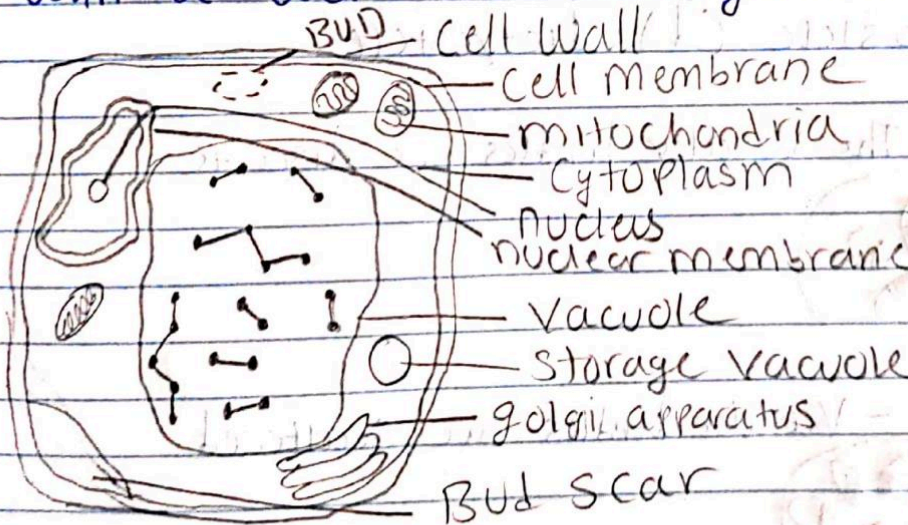
Biology Assignment

Oluwasegun Falana
19/MHS01/172

(1) How are Fungi important to man kind?

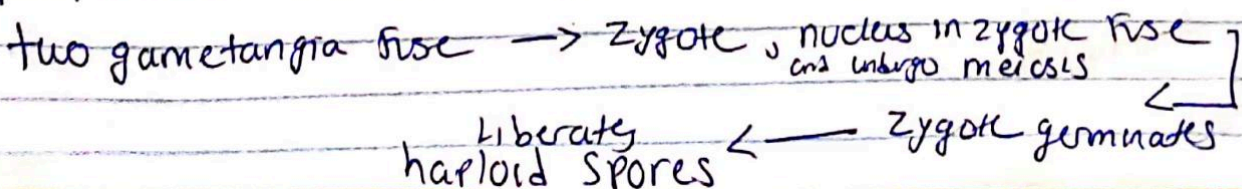
- IF Fungi is not available for decomposition, the land will be inhabitable.
- Fungi is important in the food industry
- some Fungi produce antibiotics
- Some Fungi are parasitic to some obnoxious pests
- Fungi mediate the spoilage of wood, food, clothes and paper
- Fungi mediate the decay of organic matter

(2) illustrate the cell structure of a unicellular Fungus with a well labelled diagram.



(3) Outline the sexual reproduction in a typical Filamentous form of Fungi

- Occurs when two mating types of hyphae grow in the same medium. Chemical interaction induces growths perpendicular to the hyphae in opposite directions.

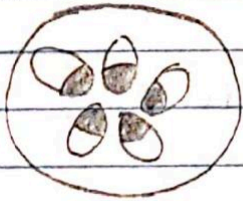


(4) How do bryophytes adapt to their environment

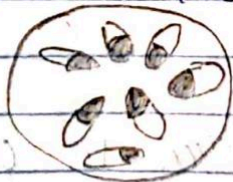
- two body divisions ; An aerial portion and a subterranean portion.
- The aerial portion has modifications that prevent excessive loss of water
- The subterranean portion is the rhizoid and it is not a true root
- Surface of the body has cuticle, the aerial portion is used as medium of gaseous exchange.

(5) Describe with illustration the following terminologies : (a) Eustele (b) Atactostele (c) Siphonostele (d) dictyostele

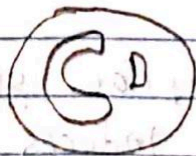
- (a) Eustele - The vascular bundles are discrete



(b) Atactostele - vascular bundles are scattered



(c) Siphonostele - the stele is a cylinder enclosing a Parenchyma



(D) Dictyostele — A stele in which the vascular cylinder is broken up 1.



(G) Illustrate the life cycle of a primitive vascular plant

