

19/MTHS01/021

ADEBITI ADEOLUWA Emmanuel

MTHS - MBBS,

BIO 102

1. How are fungi important to mankind.

In the production of food, i.e. mushrooms and other fungi are utilized in cooking.

The production of beer and other alcoholic drinks i.e. The use of yeast in fermentation.

They are essential ecologically as they are one of the most important decomposers in most ecosystems.

2. Illustrate the cell structure of a unicellular fungus with a well labelled diagram.

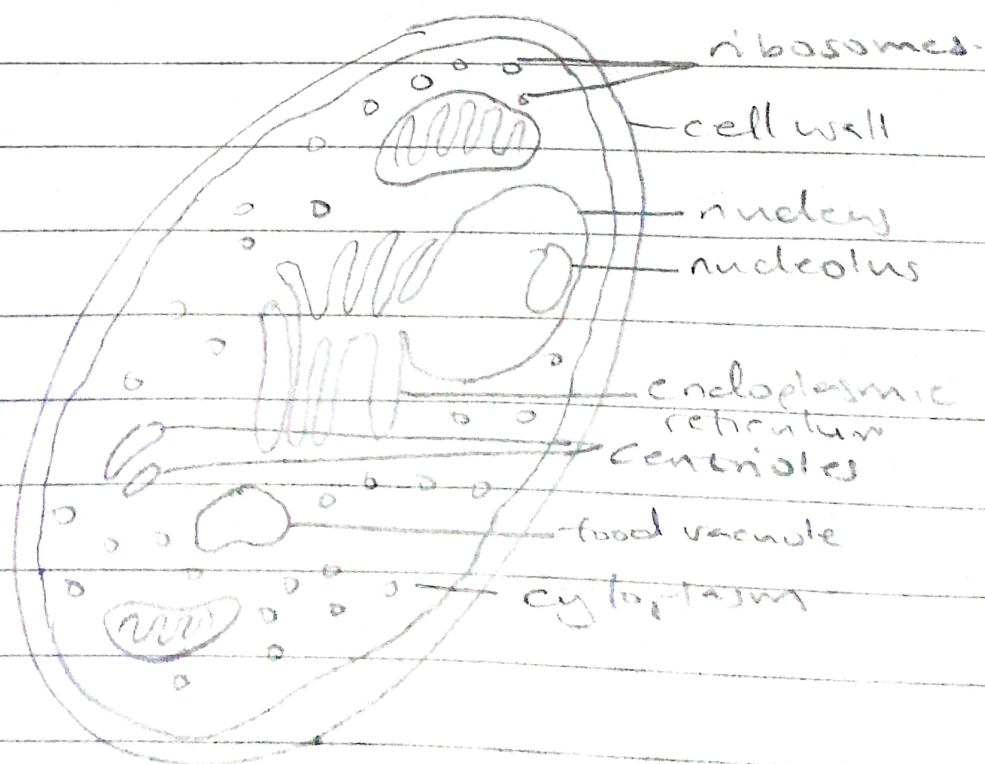


DIAGRAM OF YEAST

3. Outline the sexual reproduction of a typical filamentous form of fungi

We shall be examining the sexual reproduction of filamentous form of fungi e.g. hyphae

→ The male and female come together and these occur

- Plasmogamy - Their protoplasts fuse
- Karyogamy - Fusion of nucleus
- Meiosis - Reductional nuclear division in the number of chromosomes halves.

4. ~~Describe with illustration the following terminalogies.~~

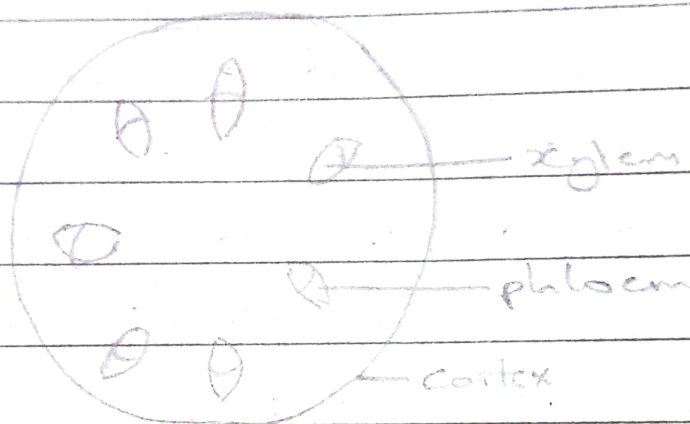
4. How do bryophytes adapt to their environment

- They possess waxy cuticle to protect against drying out
- Their spores are wind dispersed
- ~~Resession lot~~

5. Describe the following terminologies with illustrations

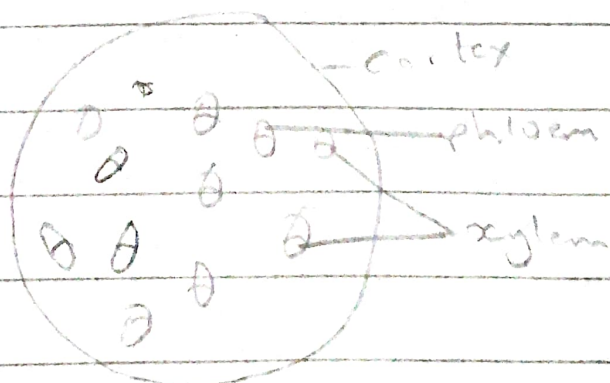
a. Eustele.

A type of siphonostele, in which the vascular tissue in the stem forms a central ring of bundles around a pith.



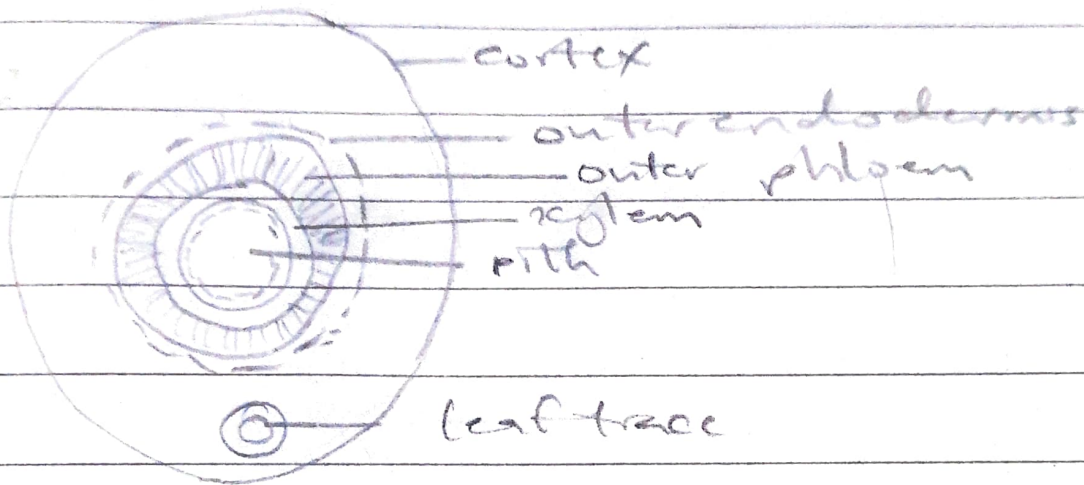
b. Atastostele

This refers to a type of eustele, mostly found in monocots in which the vascular tissue in the stem exists as scattered bundles.



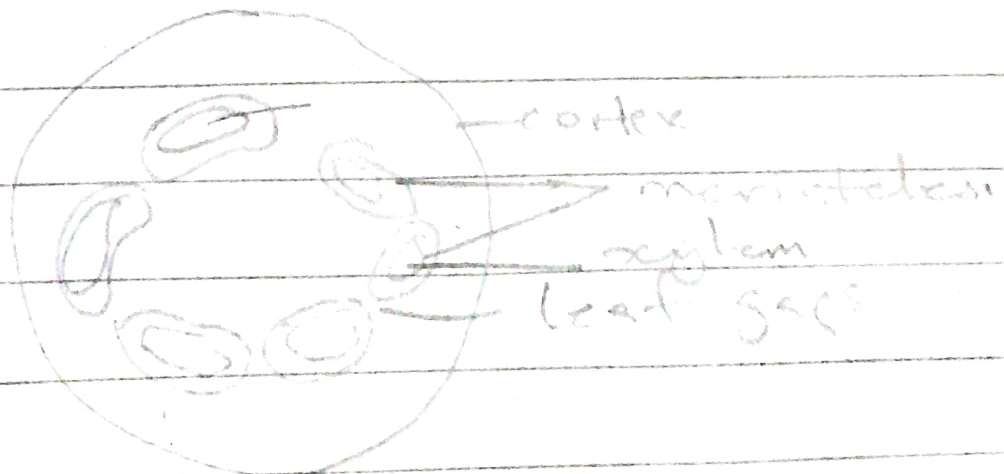
c. Siphonostele.

A stele consisting of ~~vascular~~ vascular tissue, in the form of a cylinder surrounding the pith. Occurs in most ferns and seedless vascular plants.



d. dictyostele

A stele in which the vascular cylinder is broken up into a longitudinal series or network of vascular strands around a central pith.



5. Illustrate the life cycle of a primitive vascular plant.

