

NAME: E. PERIGINI ANITA ONOME
DEPT: MBBS SERIAL NO: 1372
MATHS NO: 19 / WITSO1/149

8/5/20

Assignment (Bio 102)

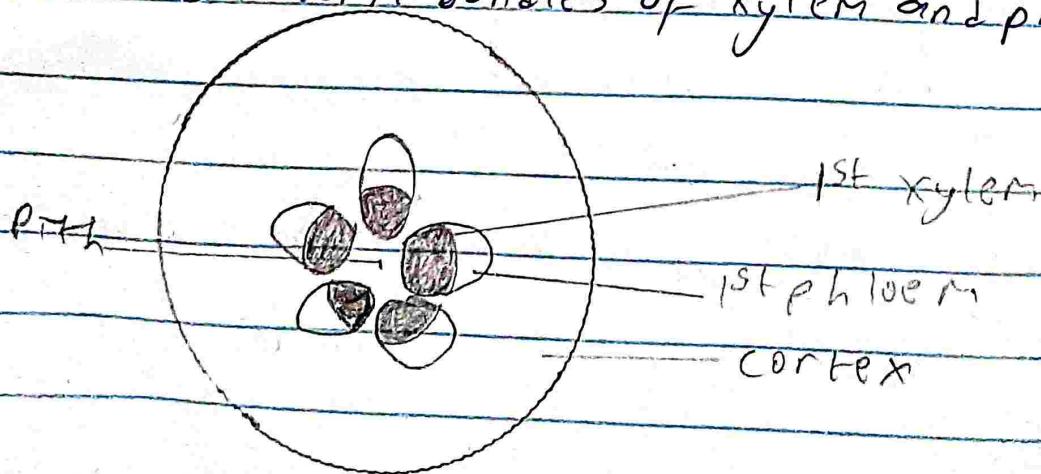
1. ~~Fungi are very important to the entire terrestrial~~
1. Fungi are responsible for the mediation of decay of organic matter. Fungi e.g. yeast are important in food industry. Mushrooms are eaten by human societies. Species of *penicillium notatum* produce important antibiotics. Some fungi are parasites to some certain ^{and} horrible obnoxious pests, therefore constitute important biological control agents in regard to such pests.
3. Sexual reproduction occurs when two mating types of hyphae grow in the same medium.
 - b. chemical interaction in the two mating types of hyphae induces growths perpendicular to the hyphae in opposite directions.
 - c. these growths are delimited by a wall such that many nuclei are isolated in what is called a gametangium.
 - d. The two gametangia fuse (plasmogamy) and a zygote is formed which may undergo prolonged dormancy or resting stage.
 - e. The nuclei in the zygote fuse in twos and undergo meiosis independently.
 - f. The zygote germinates under favourable conditions to produce a fruiting which at maturity liberates the haploid spores.

4a They have definite structures for water and nutrient absorption from the soil; therefore the plant body is divided into two (an aerial portion and a subterranean portion).

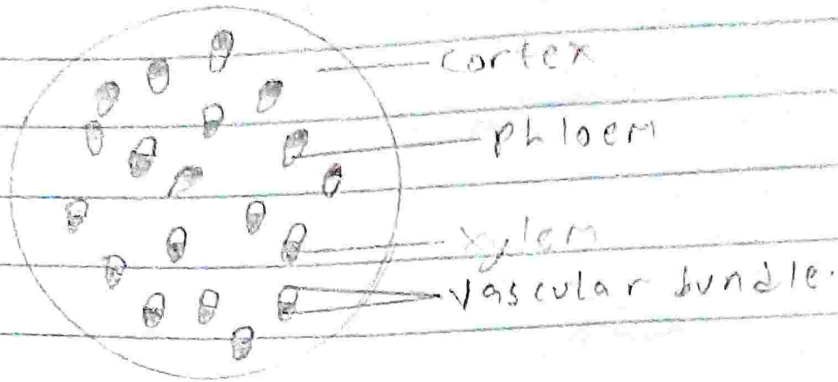
b. The aerial portion being exposed to the atmosphere demands some modifications that prevents excessive loss of water through the body surface.

c. Some other modifications that permit elimination of excess water from the plant body and not only exchange of gases between the internal parts of the plant and the atmosphere therefore openings are available on the aerial parts of the plant.

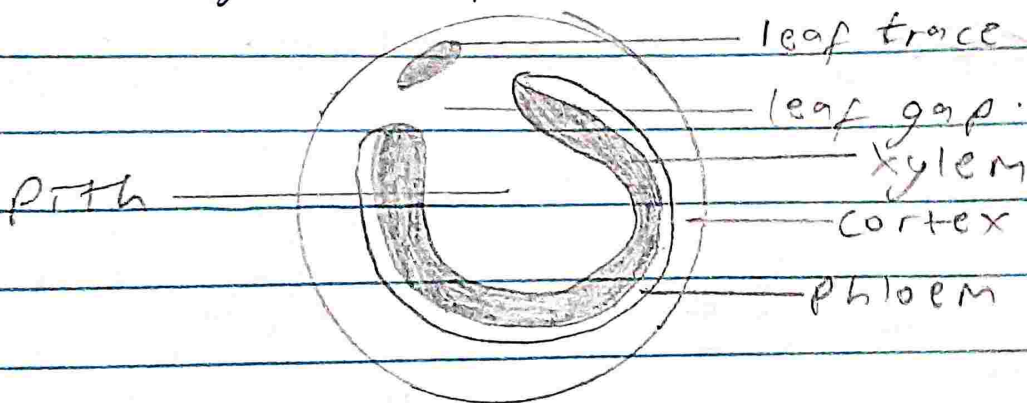
59. Eusteleles: in which the vascular plants bundles are discrete, concentric collateral bundles of xylem and phloem.



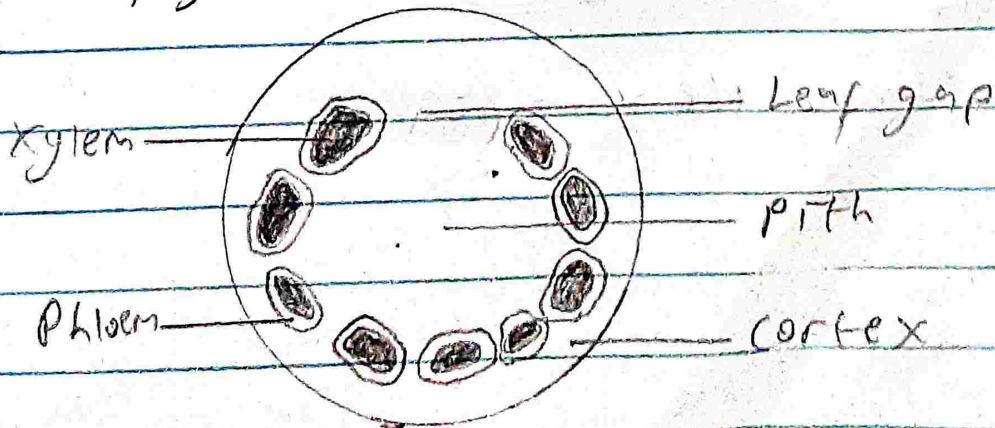
b. A fasciculate → the vascular bundles are scattered.

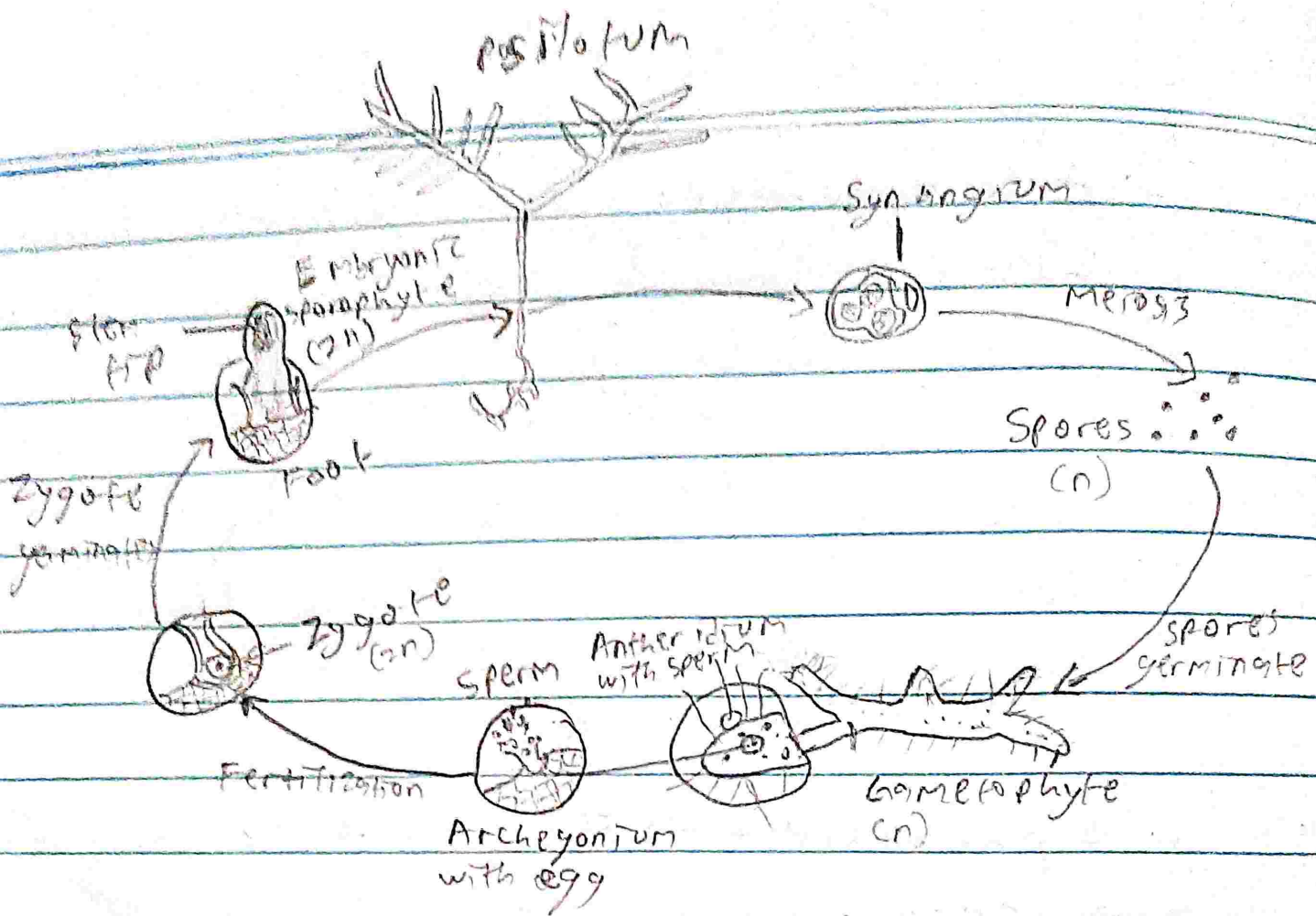


c. Siphonostele → the stele is a cylinder enclosing a parenchymatous pith.

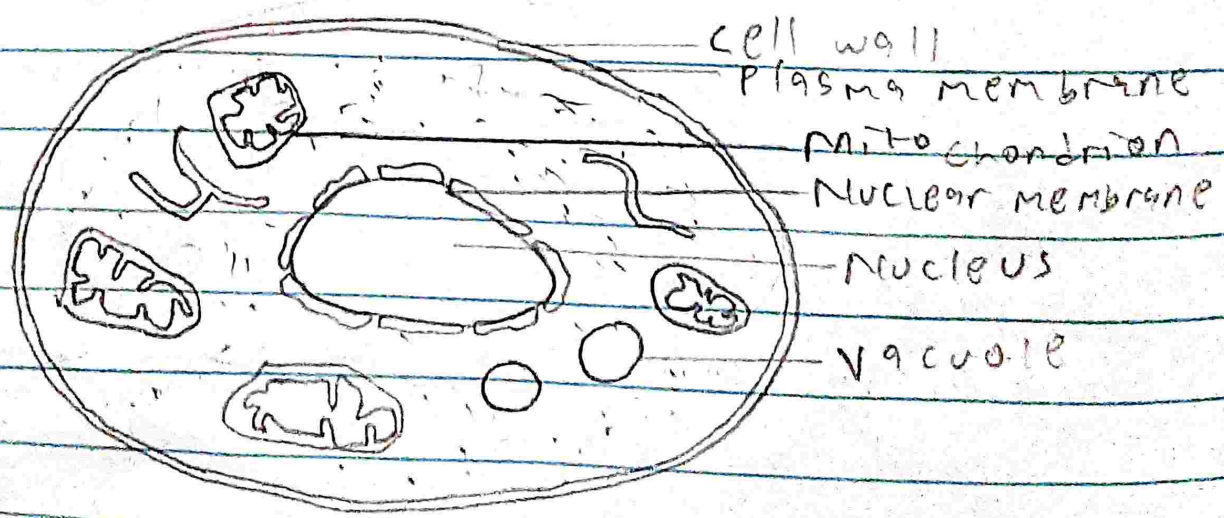


d. Dictyostele → vascular supply to leaves is associated with leaf gaps and the conducting cylinder is dissected.





Life cycle of *psilotum*.



Structure of the yeast cell.