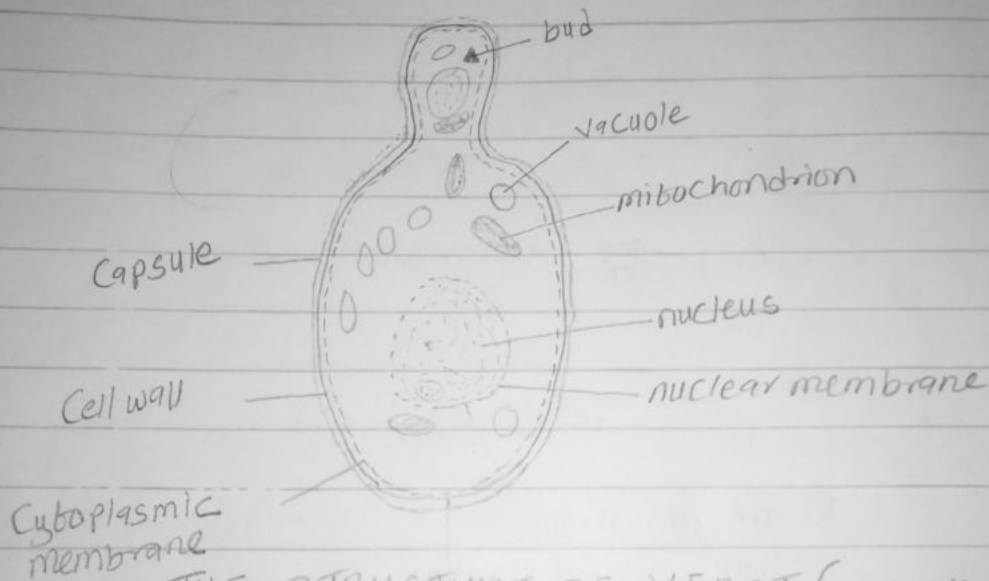


NAME:- ABIOYE BAPRIYYAH OYENIKS
 MATRIC NO:- 19/MHS01/010 DEPT: MBBS

1. a. Fungi are used for decay of organic matter
- b. Fungi (mushroom) is eaten by man
- c. Fungi is use in the production of antibiotics
- d. Fungi (eg yeast) is important in food industries for fermentation

2.



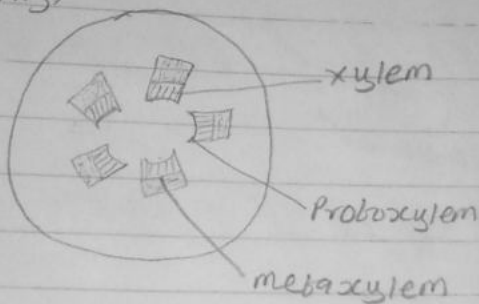
THE STRUCTURE OF YEAST (unicellular fungus)

3. Sexual reproduction in *Rhizopus stolonifer* (a filamentous fungus): It occurs when two mating types of hyphae grow in the same medium. Chemical interaction in the two mating types of hyphae induces growths perpendicular to the hyphae in opposite directions. These growths are delimited by a wall such that many nuclei are isolated in what is called gametangium. The two gametangia fuse (Plasmogamy) and a zygote is formed which may undergo prolonged dormancy or resting stage. The nuclei in the zygotes fuse in pairs and undergo meiosis independently. The zygote germinates under favourable conditions to produce a fruiting body which at maturity liberates the haploid spores.

1. They have definite structure for water and nutrient absorption from the soil: the plant body is divided into two (aerial and subterranean position). The subterranean is the rhizoid.

2. The aerial position is exposed to the atmosphere, it reduces excessive loss of water.

3. 4. Eustele + It is characteristic of Gymnosperms and dicots. In this type of stele collateral or bicollateral vascular bundles are present in a ring.



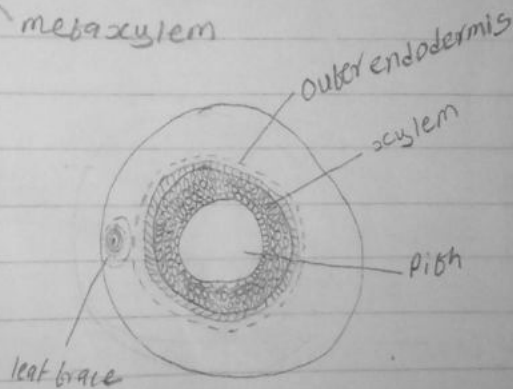
EUSTELE

4. 5. Atactostele + It is characteristic of monocots. In this type of stele vascular bundles are scattered in the ground tissue. It is the highly evolved stele organization.



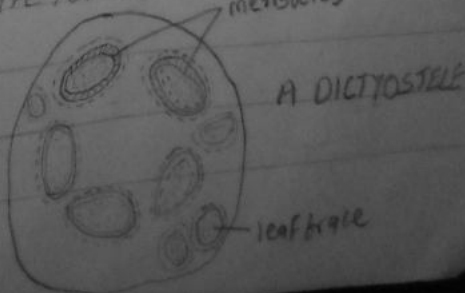
Atactostele

6. Siphonostele + A stele with a central pith surrounded by vascular bundles is called siphonostele or a reduced protostele is called siphonostele.

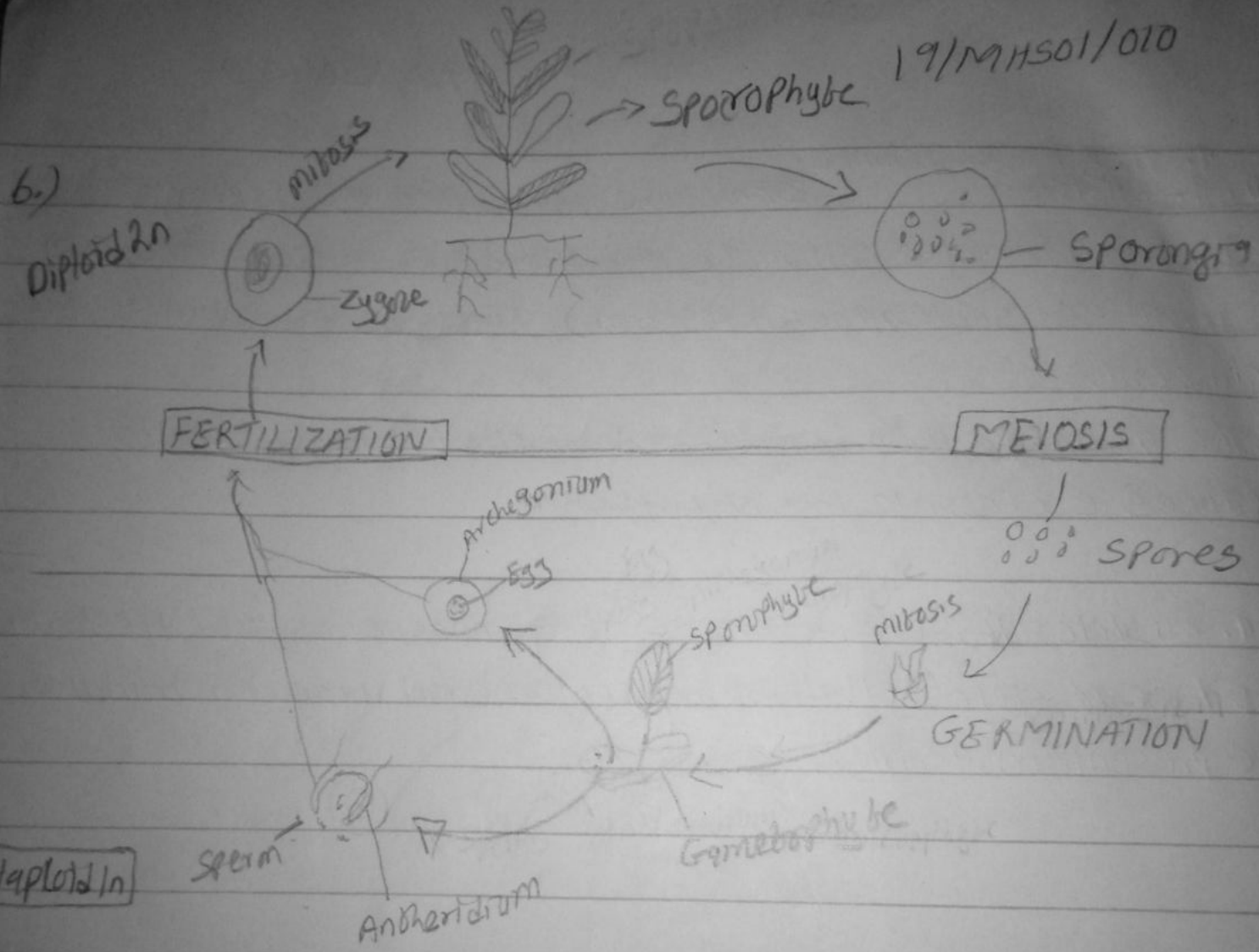


SIPHONOSTELE

7. 8. Dicotylostele + A siphonostele with more overlapping leaf gaps so as to show more than interruption in one transverse section is known as dicotylostele. The vascular parts of dicotylostele between neighboring leaf gaps are known as mesosteles, mesosteles.



A DICTYOSTELE



LIFE CYCLE OF A FERN