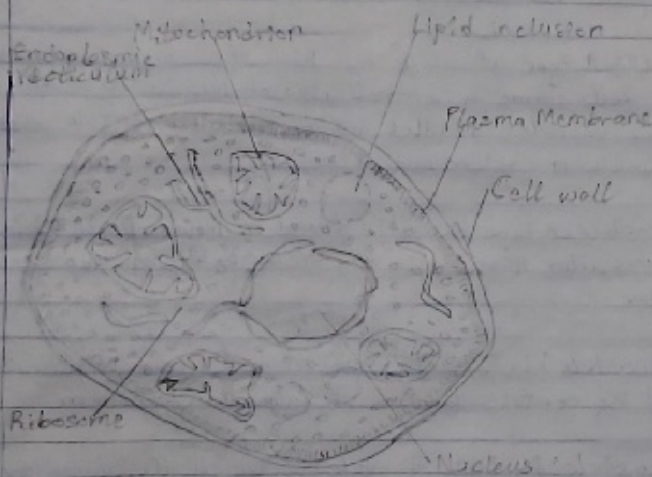


BIO 102

BOBI NAOMI NINJORIFE
BIOLOGY 102 ASSIGNMENT
100 LEVEL DENTISTRY
MHS.

1. The importance of fungi to man kind are;
 - i) They are decomposers in most ecosystem.
 - ii) They are essential for the growth of most plants.
 - iii) They play a role in human nutrition as via food in forms of mushrooms.
 - iv) They serve as agents of fermentation in the production of bread, cheeses, alcoholic beverages, etc.
 - v) They serve as parasites to obnoxious pests of man.
 - vi) It is used in the synthesis of enzymes.

2.



A Well labelled diagram of The Cell Structure of A Unicellular Fungus.

3. The sexual reproduction in a typical filamentous form of fungi are;
 - i) Plasmogamy, karyogamy and meiosis.
 - ii) Plasmogamy
 - iii) Karyogamy
 - iv) Meiosis

The diploid chromosomes are pulled apart into two daughter cells, each containing a single set of chromosomes (a haploid state)

In filamentous fungi, the mycelium may fragment into a number of segments, each of which is capable of growing into a new individual.

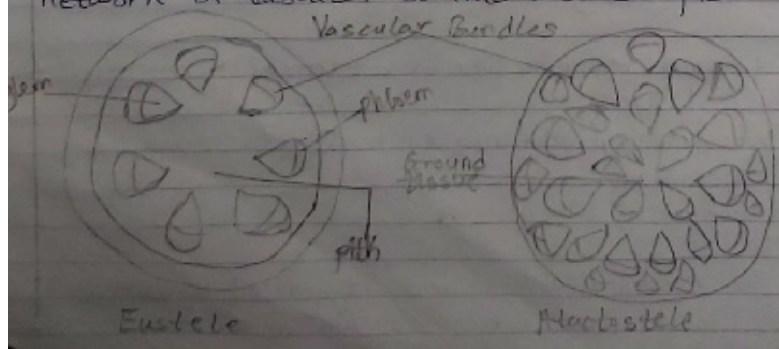
4. Bryophytes adapt to their environment via:
- i. The use of their waxy cuticle to protect the plant tissues from drying out (desiccation)
 - ii. The use of their gametangia to protect the plant gametes from desiccation
 - iii. They possess definite structures for water and nutrient absorption from the soil.

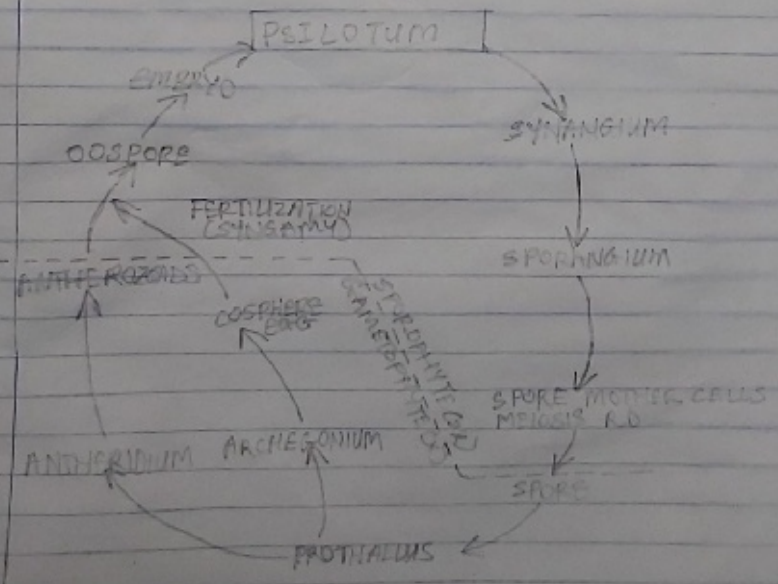
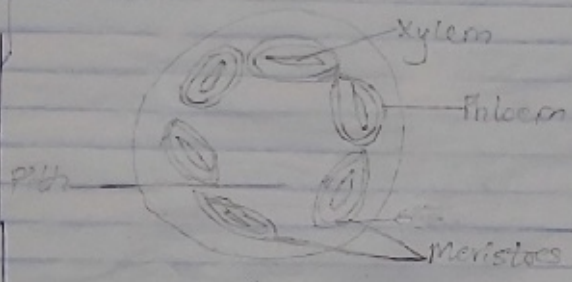
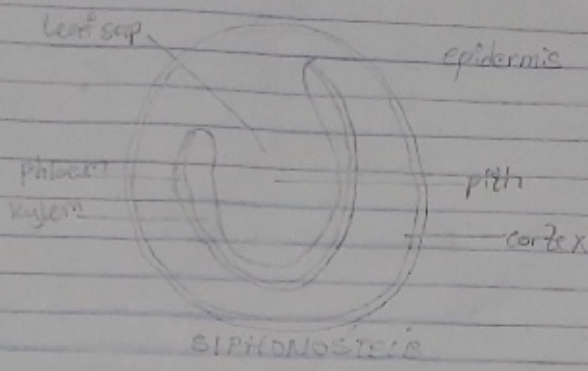
a) **Eustele**: A type of stele in which the vascular tissue in the cell forms a central ring of bundles around a pith. The vascular bundles are discrete, concentric collateral bundles of xylem and phloem.

b) **Atactostele**: A type of stele found in monocots, in which the vascular tissues in the stem exists as scattered bundles.

c) **Siphonostele**: is a stele consisting of a core of pith surrounded by concentric layers of xylem and phloem.

d) **Dictyo stele**: A type of stele in which the vascular cylinder is broken up into a longitudinal series or network of vascular strands around a pith.





THE LIFE CYCLE OF A PRIMITIVE VASCULAR PLANT (PSILOTUM)