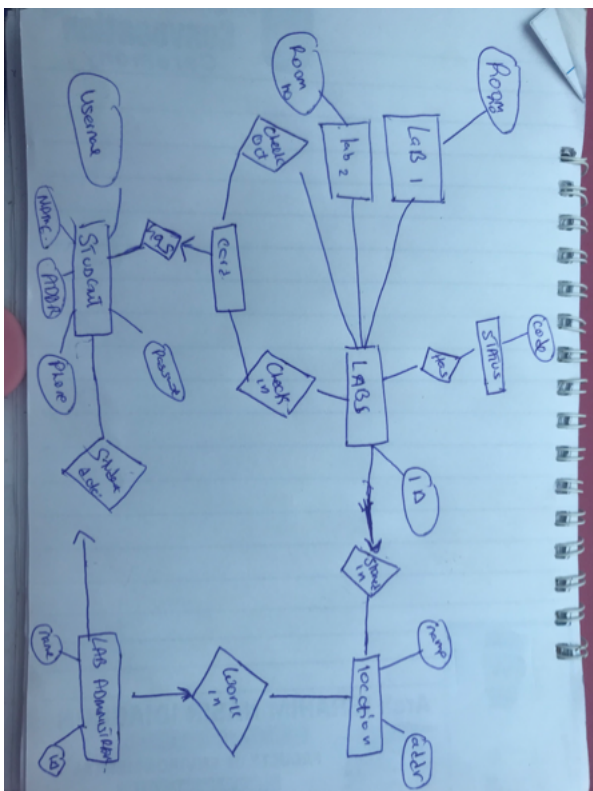


CSC 306

Nasir Firdaus Opeyemi

17/sci01/051

5.



1.

1. Sharing of data and

multiuser transaction processing.

2. Clean, consistent, and easy to understand.
  3. Provides efficient access to data.
  4. Avoids redundant storage of data items.
  5. Supports the maintenance of data integrity over time.
- 
2. A relationship is said to be optional when it indicates that it is not necessary for every entity occurrence to participate in the relationship .i.e the least number of instances in which each participates, in each instance of the relationship is zero.
  3. Partial participation or

Optional participation can be defined as an instance that specifies that each entity in the entity set may or may not participate in the relationship instance in that relationship set.

4.

DML (Data Manipulation Language)	DDL (Data Definition Language)
In DML is a type of SQL which is using to manage the data in the database.	In DDL is a type of SQL which is using to change the structure of the database.
In DML effects one or more rows.	In DDL statements effects the whole table.

In DML statements can be rolled back.	In DDL statements cannot be rolled back.
It is further classified into Procedural and Non-Procedural DML.	It doesn't have any further classification

5.

St at us	C od e	D es cri pti on				
La b	La b ID					
La	R	La				

b1	oo m nu m be r	b ID				
St ud en t	N a m e	A d dr es s	P h o n e	U s e r n a m e	Pa ss w o r d	Id *
C a r d	N u m	Id *				
C h e c k o u t	U n t i l	Fr o m				
C h e c k i n	Fr o m	Til l				

Lo ca tio n	N a m e	A d dr				
La b A d mi ni st ra to r	N a m e*	Id *				

- Is foreign key constraint