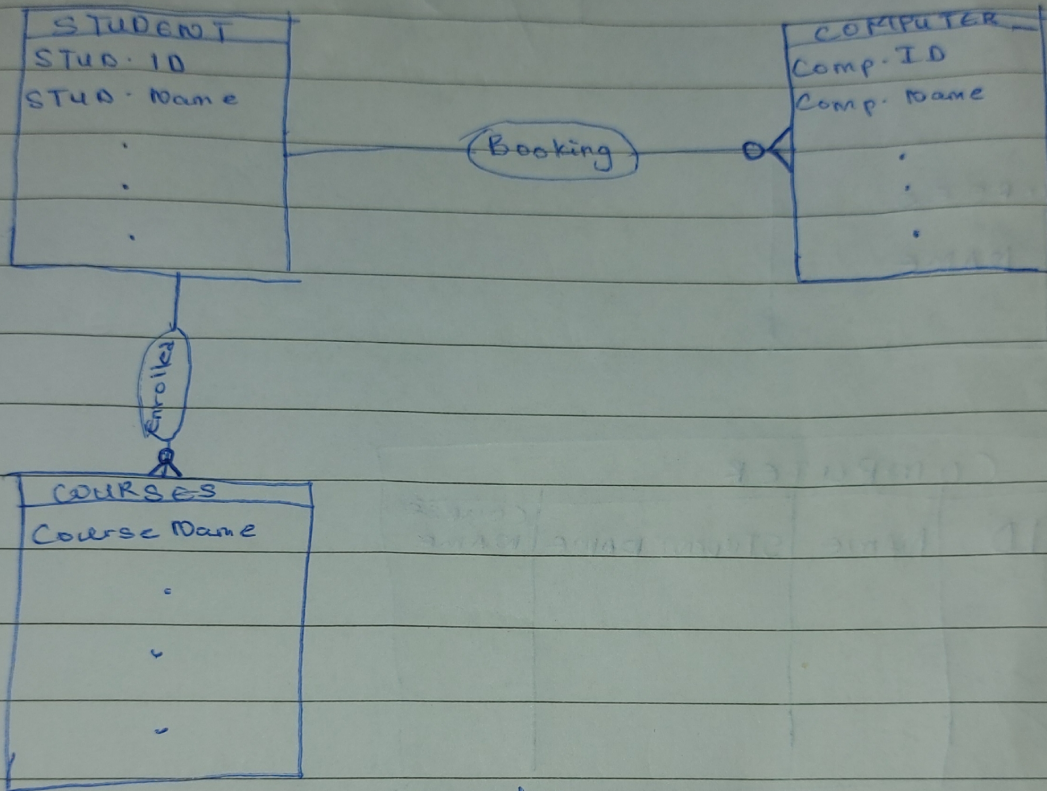


- 5) * Courses
 * Type of lab computer
 * Student



- Each student ^{can be} ~~are~~ entitled to zero or many computers
- Each computer is booked by a student
- Each student ^{can be} ~~are~~ enrolled to zero or many courses
- Each course ^{are authorized} ~~is~~ taken by a student

1) It is used to get result
It is used for easy computation
It is used for to create a system ~~to~~
maintain and update data
It is used for good decision making
It is used to manipulate or modify data

2) A relationship is optional in the sense that an entity might want to participate or might not want to participate.

3) Partial participation in a relation has to do with when an entity might want to partake in an activity or has a choice to ~~part~~ take part in it or not.

4) DDL specifies database schemas while DML includes the retrieval of data stored in the database, insertion of new data into the database, deletion of data from the database and modification of data stored in the database.

Table

STUDENT	
NAME	ID

COMPUTER		
ID	NAME	STUD NAME
		COURSE NAME

COURSES	
ID	NAME

STUDENT ID, COMPUTER ID and Course ID are primary

Keys

For computer; student name and course name are the foreign keys.