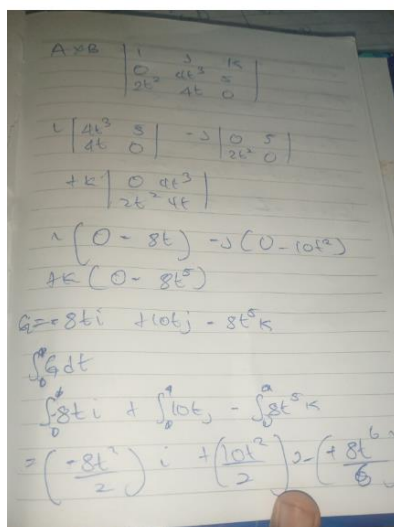
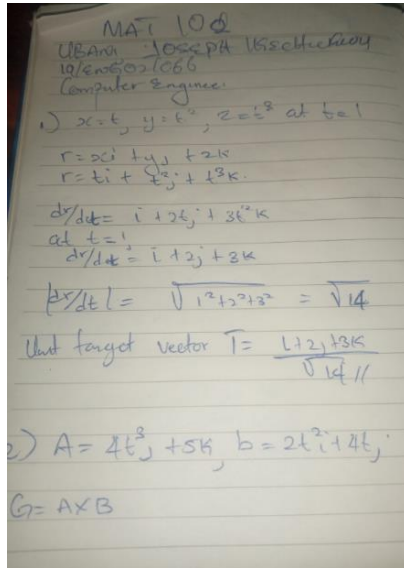


UBANI, JOSEPH IKECHUKWU

COMPUTER ENGINEERING

19/ENG02/066



$$-at^2 + st_j = \frac{4}{3}t_k$$

at $t=1$
 $-a_i + s = \frac{4}{3}k$

at $t=0$
 $a_i + s_j$ to 15
upper bound - lower bound.

$$\int_{\text{end}} = -2t_i + s_j - \frac{4}{3}k //$$