

**NAME: FEHINTOLA OLAJUMOKE STELLA**

**MATRIC NO: 19/MHS11/064**

**COLLEGE: MHS**

**COURSE CODE: CHM 102**

**DEPARTMENT: PHARMACY**

1i)  $\text{CH}_2=\text{C}(\text{OH})\text{HCHO}$ - Alkene group (double bond), Hydroxyl group(OH) and Formyl group(CHO).

ii)  $\text{C}_6\text{H}_5\text{CH}(\text{NH}_2)\text{COCH}_3$ - Keto group, Amino group and Aromatic group.

iii)  $\text{CH}_3=\text{CHCH}(\text{OH})\text{CHO}$ - Aldehyde group, Hydroxyl group and Double bond.

2) Recall;  $[\alpha]_D^{25} = \frac{\alpha}{l \cdot c}$

Where  $l$  = length of sample used

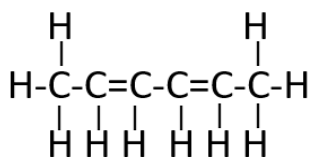
$$C = \frac{\text{mass}}{\text{volume}}$$

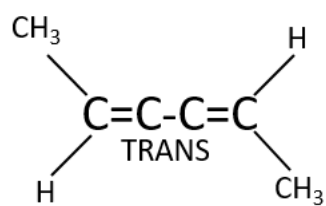
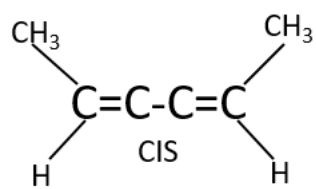
$\alpha$  = observed rotation

$$S\gamma = \frac{1.0}{1.0 \left( \frac{0.856}{10} \right)}$$

$$S\gamma = \frac{1}{0.0856} = 11.68$$

3i)





3ii)

