

Name; Ariole Jennifer Kesiena  
Dept; mbbs  
Matrix no; 19/MHS01/100

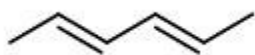
- 1) a) Aldehydes, alcohols, alkene
- b) amide and carboxyl group
- c) Aldehydes, alkene, alcohol, alkyl

2) Conc in g/cm<sup>3</sup> = gram/volume in cm<sup>3</sup>  
= 0.856g/10cm<sup>3</sup>  
= 0.0856g/cm<sup>3</sup>

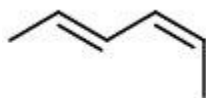
Specific rotation (2R,3R) = observed rotation (degrees) / conc in g/cm<sup>3</sup> × path length of sample cell in DM

= +1.0° / 0.0856g/cm<sup>3</sup> (1dm)  
= +11.76° g<sup>-1</sup> cm<sup>3</sup> dm<sup>-1</sup>

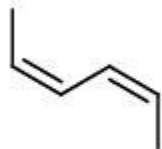
3) (2E,4E)-hexa-2,4-diene



(2E,4Z)-hexa-2,4-diene



(2Z,4Z)-hexa-2,4-diene



b) 2,3-dimethylbut-2-ene does not possess geometric isomers

