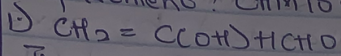


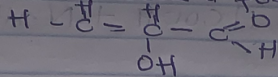
Name: AGOMOH, CHIAMAKA BLESSING

Matrix No  
Department: 19/MHSDI/058

Department: CHM102



The structural formula

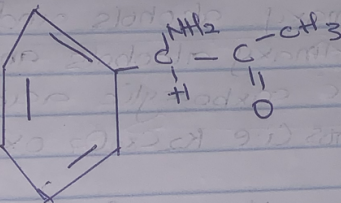
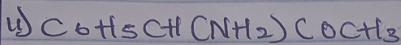


functional present are:

a) Double bond chain = (Alkene)

b) OH (hydroxyl group)

c)  $\text{C}=\text{O}$  (Alkanol)

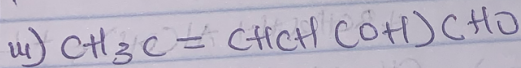


functional present

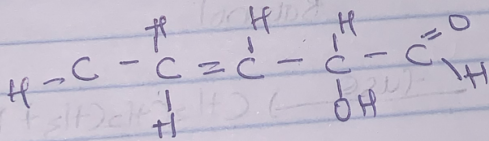
a) Phenyl group ( $\text{C}_6\text{H}_5$ ) with double bonds

b) Amine

c) Alkanone/ ketone ( $\text{C}=\text{O}$ )



structure:



functional present:

a) Alkene ( $\text{C}=\text{C}$ )

b) Hydroxyl group ( $\text{OH}$ )

c) Alkanol ( $\text{C}=\text{O}$ )

Name: AGOMDI, CHIAMAKA BLESSING

Matric No: 191M4SD1/058

2) Recall:

$$[\alpha]_D^{25} = \frac{\alpha}{l \times c}$$

where

$l$  = length of sample tube

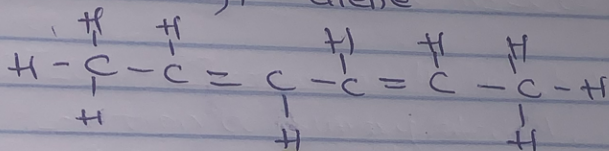
$c$  =  $\frac{\text{mass}}{\text{volume}}$  (g/dm) or (g/ml)

$\alpha$  = observed rotation

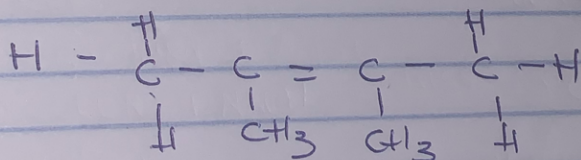
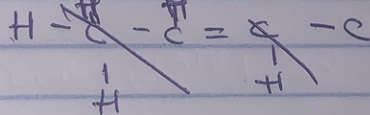
$$S_p = \frac{10}{l \times \left( \frac{0.856}{10} \right)}$$

$$S_p = \frac{1}{0.0856} = 11.68$$

3) Hexa-2,4-diene



ii) 2,3-dimethylbut-2-ene



OR

