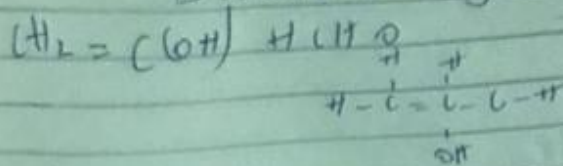


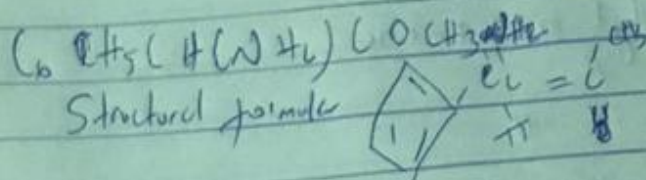
Openness Sonto

14/10/08/008

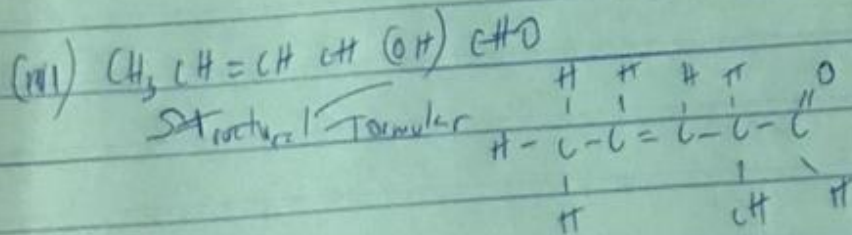
Bio Medical Engineering



- Functional group present are:
- Double Bond Chain (Alkene)
 - OH (Hydroxyl) group
 - C=O (Alcohol)



- Functional group present are:
- Phenyl group (C₆H₅) with double bond
 - Amine
 - Alkene / Ketone (C=O)



Functional Group present

- Alkene (C=C)
- Hydroxyl group (OH)
- Aldehyde (C=O)

2) Recall τ

$$C(\alpha) \tau = \frac{x}{1 \times l}$$

where l = length of sample

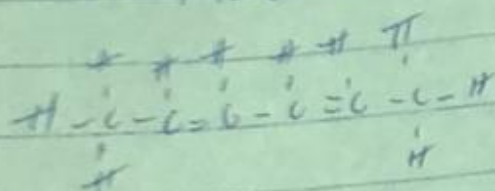
$C = \frac{\text{mass}}{\text{volume}}$ (g/cm³) or (g/ml)

$\alpha = \text{Observed rotation}$

$$S = \frac{10}{100 \times (10 \text{ g/100 ml})}$$

$$S_{\text{obs}} = \frac{1}{0.0556} = 11.68$$

Hex-2,4-diene



1) 2,3-Dimethylbut-2-ene

