

①

OKPODI JESSICA

18/ENG07/010

PETROLEUM ENGINEERING

ENR 2024

PROBLEM: DESIGN AN APPLICATION FOR THE CHALLENGES ON THE ABUAD FARM DURING THE IRRIGATION SYSTEM OF THE FARM.

Answer

- Understanding the Problem

∴ During dry season, the farm experiences some challenges which may cause a rise or decrease in the temperature of the soil, moisture of the soil, constant and healthy function of the soil in ability for crops and plants to grow.

- Role of the System Analyst

∴ The Software design will include inputs as passwords and entry formats which will interact with the user. This software will enable the user know the implications of the different challenges on the farm.

- Problem Analysis

The system design will definitely be complex because it will show different processes and challenges including the soil texture and content. The nature of this software program

Hardware & Software Features

Development of this systems includes as follows:

- Start
- Create a Project
- Plan the application by using methods and programming languages.
- Building the application interface.
- Coding the application program
- Testing the program
- Debugging
- Assembling each step to develop the program
- End.

Hardware Features

- Simplicity for the End User: Designing is not what it looks like and feels like. Design is how it works. The workflow and principles that will be used to create and deliver water supply throughout the whole farm.
- Touchscreen and face scanning features: This will be enabler to enhance the farm user interaction.
- GPS: Operating the GPS services so that location services will be enabled to view and enable the water supply and also view places whereby the water supply are not getting to.
- GDPR standards: General Data Protection Regulation will protect personal data like

(5)

passwords and fingerprints. This feature ensures firm hardware to software which stores and protects personal data to users created for privacy and security.

Software Features

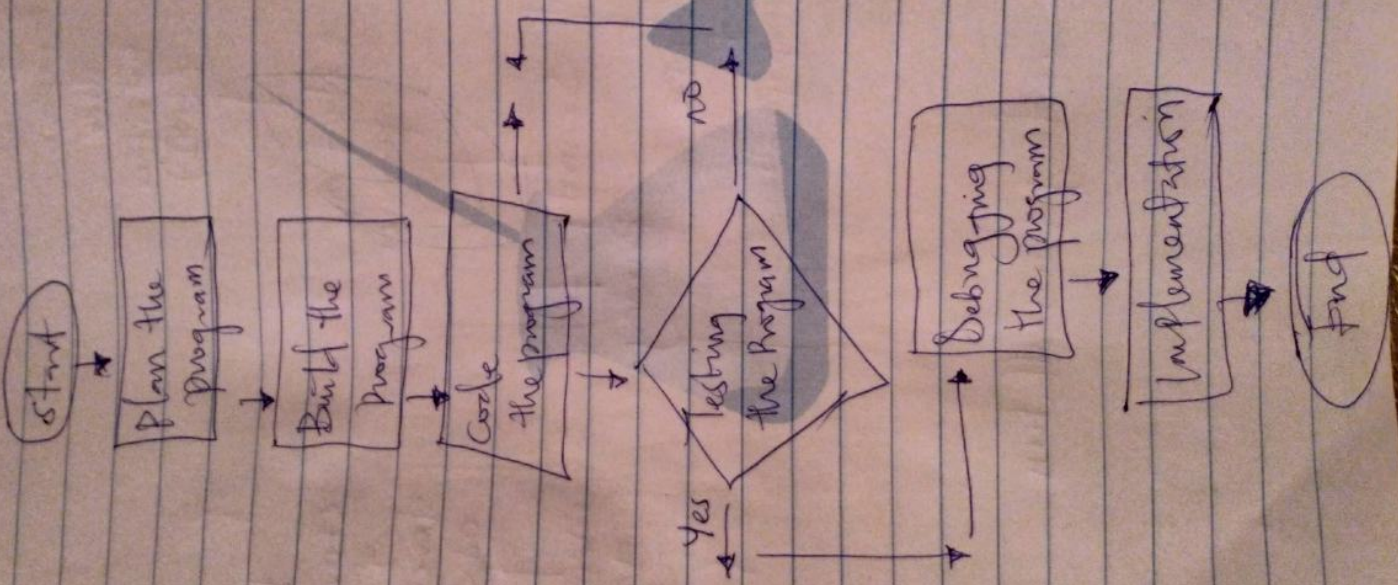
The single function of any application is to please the user. It is machine dependent which means it needs a machine language to operate and most prevalent high language. Also allows the use of system programming.

ALGORITHM

Step 1: Start

- 2: Create and start the project
- 3: Plan the program by using the language
- 4: Building the application program by defining the analysis on the form
- 5: Coding the program
- 6: Testing the program
- 7: Debugging the program by usage of tool
- 8: Assembling each step by implementing
- 9: Installation of development
- 10: End.

Flowchart



Application

Graphic User Interface (GUI)

Machine language

Develop the program

Security

GDPR

touch. fingerprints
Screen

Handsome features

Storage development
OT SD - Cards

Memory accesses
files

Testing

Debugging, coding & installation

