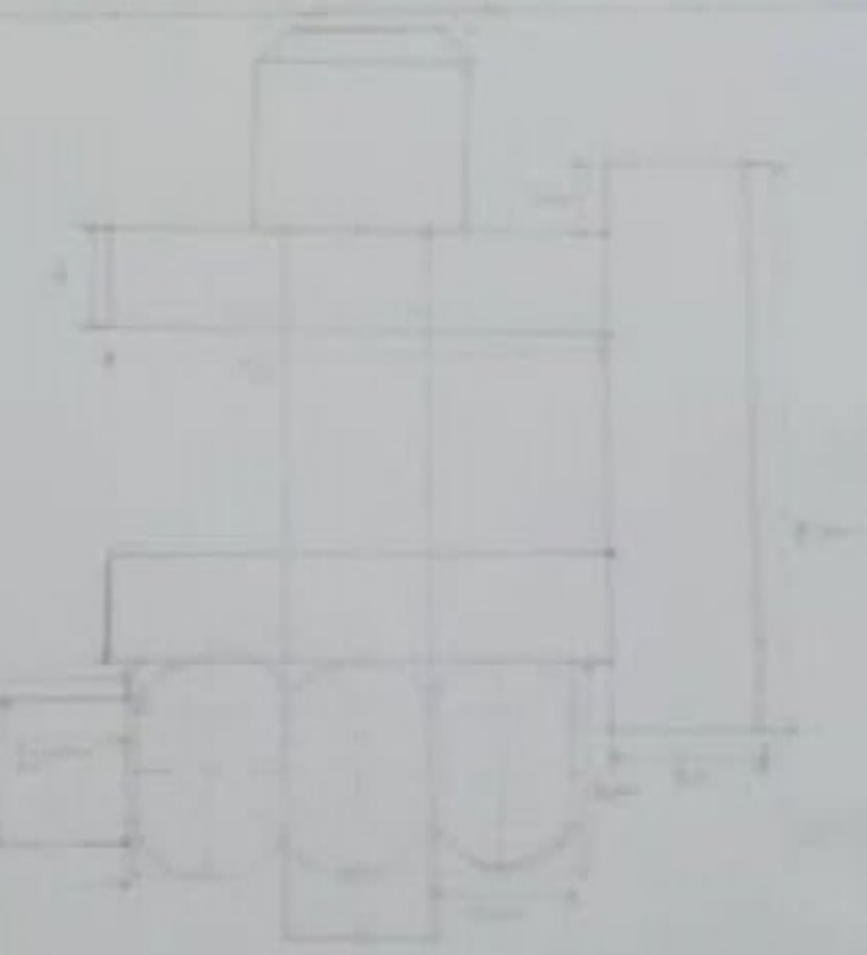
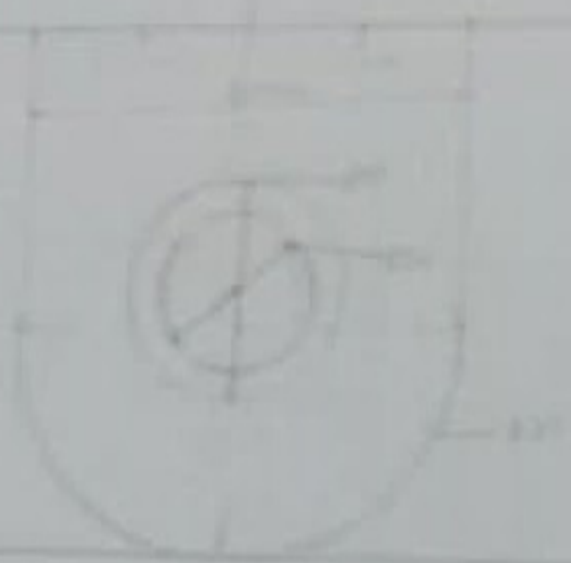


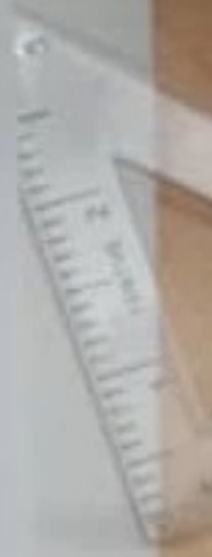
NAME	MINUDU OKELIYANU
DEPARTMENT	ELECTRICAL
MAT. NO.	R/ENGLD4055
TITLE	ASSEMBLY



Handwritten notes and a table:

Part No. 101

Sl. No.	Part Name	Quantity	Material
1	Shaft	1	MS
2	Washer	1	MS
3	Nut	1	MS
4	Washer	1	MS
5	Nut	1	MS



120mm

20mm

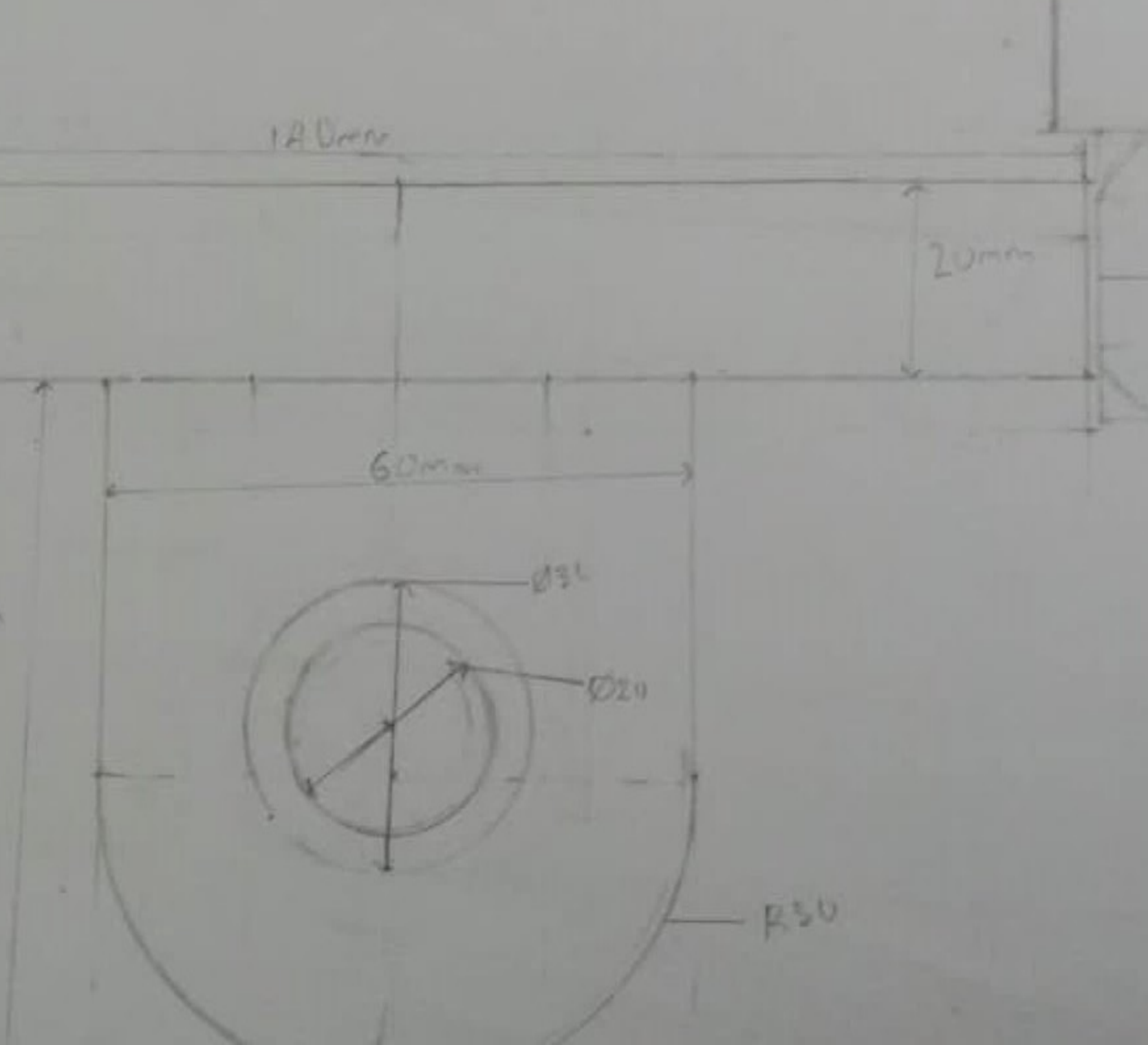
60mm

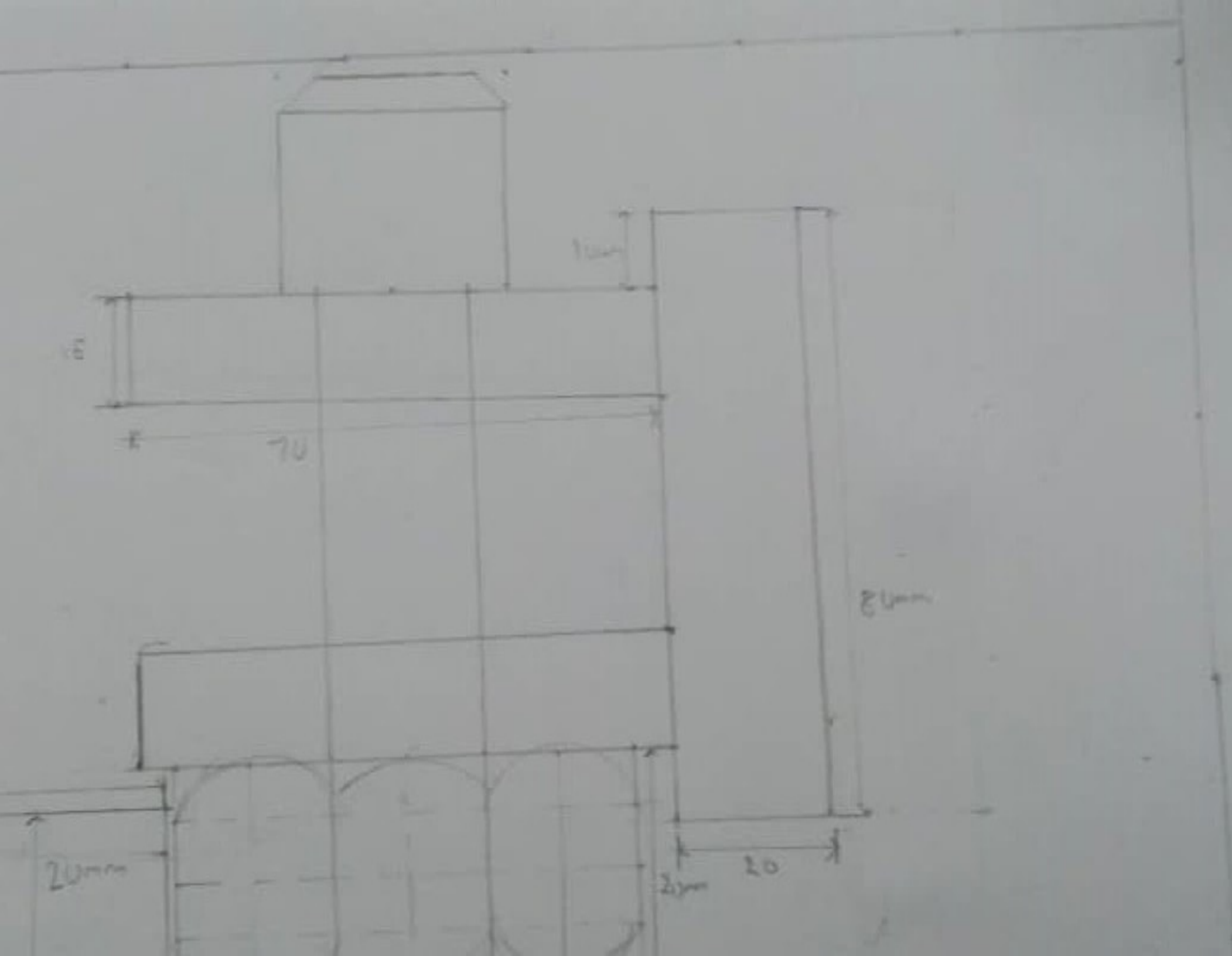
70mm

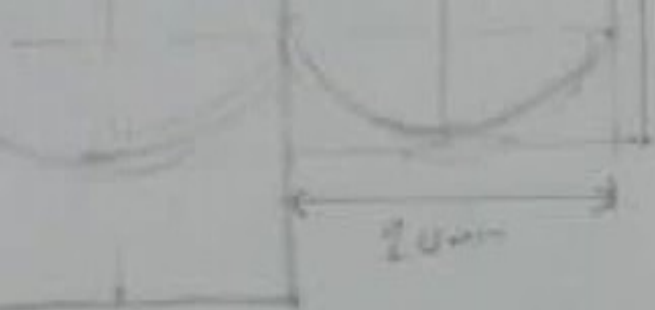
Ø36

Ø20

R30

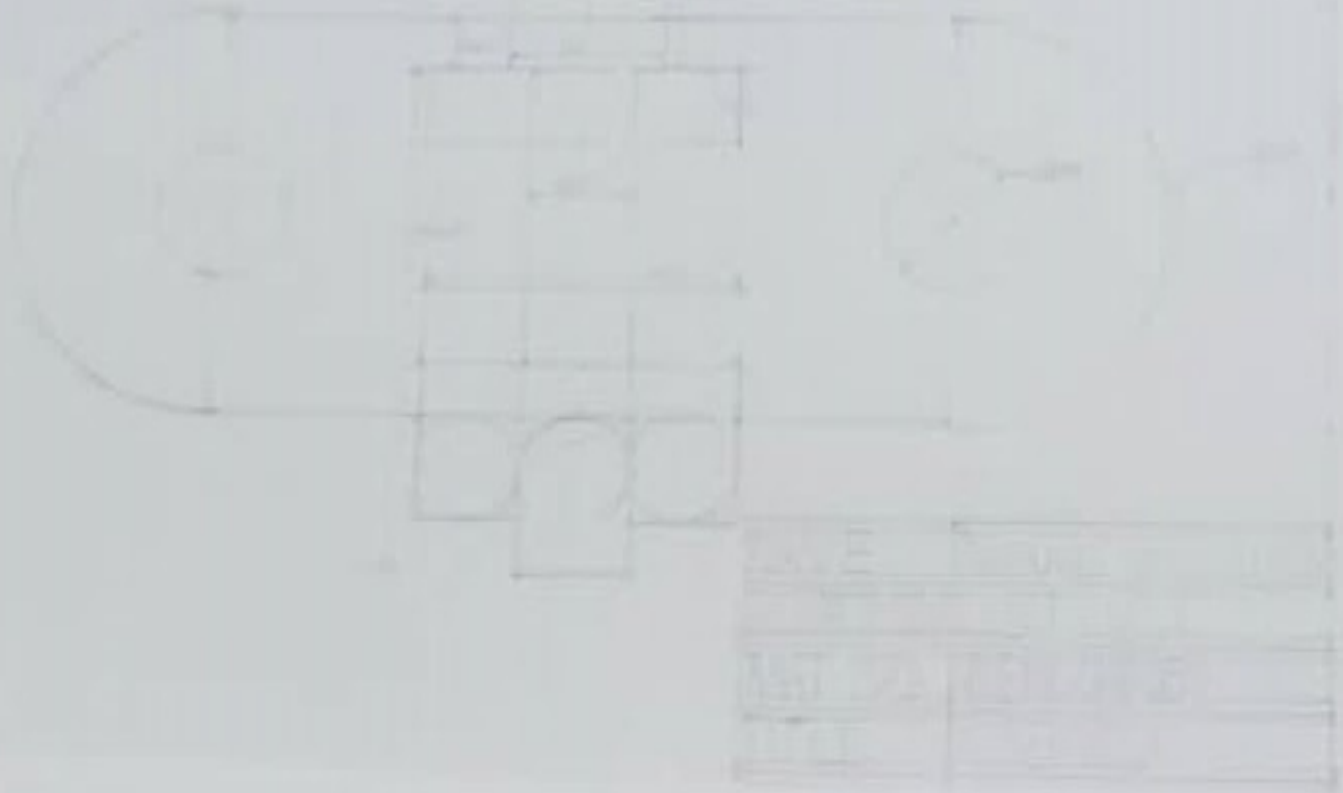







## Parts list

S/N	Name	Quantity	Dimension
1	Spindle	1	$5 \times 45^{\circ}$
2	Nut	1	$100 \times \phi 25$
3	Towing bracket	1	$140 \times 80$ $\phi 40$ both ends





NEWYUO OKECHUKWU

INVENT ELECT-ELECT

NO. 18/ENIG04/055

ASSEMBLY