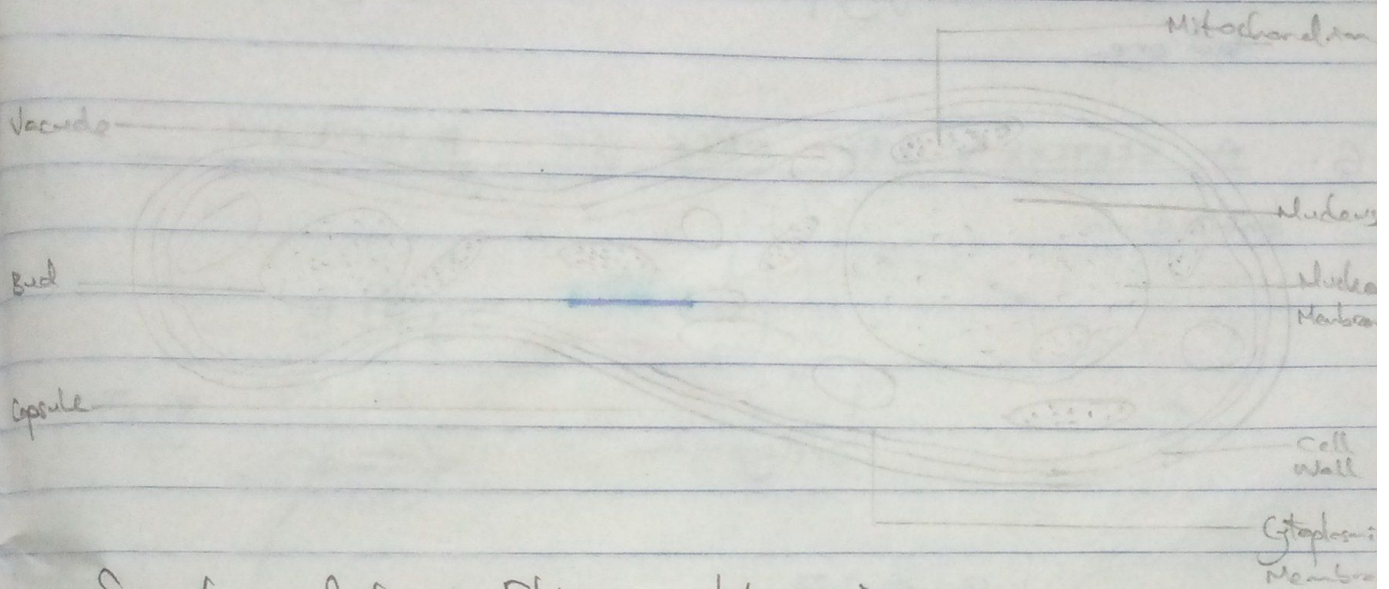


Assignment

- i. Fungi are responsible for the mediation of decay of organic matter
- ii. Fungi are important in the food industries - by yeast in bread industries
- iii. Some fungi are parasites to some certain obnoxious pests.
- iv. Mushrooms are edible in many human societies

2. THE STRUCTURE OF SACCHAROMYCES CEREVISIAE (YEAST)



3. Sexual reproduction in Rhizopus stolonifer:

This occurs when two mating types of hyphae grow in the same medium. Chemical interaction in the two mating types of hyphae induces growth perpendicular to the hyphae in opposite directions - these growths are delimited by a wall such that many nuclei are isolated in what is called a Gametangium.

- i. They have definite structures for water and food absorption from the soil called rhizoid.
- ii. The aerial part being exposed to the atmosphere demands some modifications that prevent water loss through the body surface.
- iii. Some other modifications permit excess water elimination from the body and not only exchange of gasses.

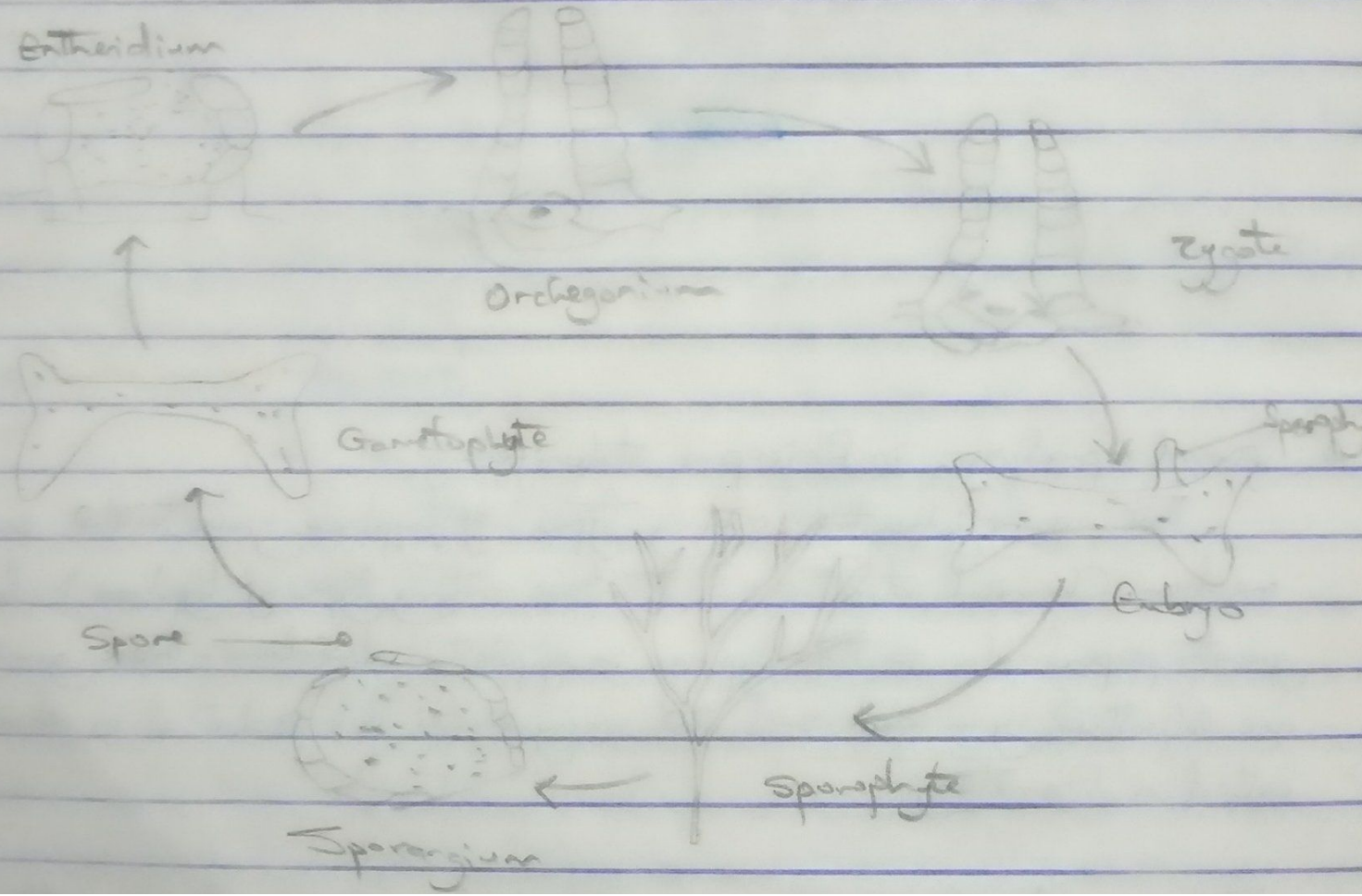
5a. Asteris: Present in herbaceous dicotyledonous plants. Here the vascular bundles are discrete, concentric collateral bundles of xylem and phloem.

b. Atactostele: Present in grasses and many monocotyledonous plants. Here the vascular bundles are scattered.

c. Siphonostele: Present in stems of ferns and higher vascular plants. The stele is cylindrical and encloses the parenchymatous pith.

d. Nidostele: Present in siphonostele. Vascular supply to leaves are associated with leaf gaps and the conducting cylinder is a dissected one.

6 A SKETCHED LIFE CYCLE OF PSILOTUM



Atposiwodor Ogheredo

19/11/50/1018

MBBS